

**Welsh Wreck Web Research Project**  
**(North Cardigan Bay)**  
**On-line research into the wreck of the:**  
***Reindeer***



**A Schooner**

Report compiled by:  
**Graeme Perks**

Report Title:

**Welsh Wreck Web Research Project  
(North Cardigan Bay)  
On-line research into the wreck of the:  
*Reindeer***

Compiled by:

**Graeme Perks**  
graperks@aol.com  
Sutton Coldfield  
UK

On behalf of:

**Nautical Archaeology Society**  
Fort Cumberland  
Fort Cumberland Road  
Portsmouth  
PO4 9LD  
Tel: +44 (0)23 9281 8419  
E-mail: [nas@nauticalarchaeologysociety.org](mailto:nas@nauticalarchaeologysociety.org)  
Web Site: [www.nauticalarchaeologysociety.org](http://www.nauticalarchaeologysociety.org)

Managed by:

**Malvern Archaeological Diving Unit**  
17 Hornyold Road  
Malvern  
Worcestershire  
WR14 1QQ  
Tel: +44 (0)1684 574774  
E-mail: [MADUdiving@gmail.com](mailto:MADUdiving@gmail.com)  
Web Site: [www.madu.org.uk](http://www.madu.org.uk)

Date:

**April 2021**

Report Ref:

***Leave blank***

## 1.0 Abstract

The “www Research Project” is about, discovering by on line research details of ships, on the MADU data base of wrecks of North Wales, the circumstances of their loss, details of the owners and crew, the cargo carried and their history.

The Reindeer was a wooden schooner of 75 tons built in 1841 at Nevin by Richard Davies and was registered at Pwllheli. The first owners of Reindeer were Roberts & Co. In 1843 the master Robert Hughes died suddenly in Tralee and after Reindeer had been brought back to Wales Hugh Griffiths became the master and later the owner. In December 1847 Reindeer was driven ashore on Puffin Island, crew saved. Reindeer continued trading between Wales, Ireland and London with some voyages to the North East of England and both coasts of Scotland. Reindeer made some voyages to France and one to Spain in 1855/6 but this was unusual. The voyages from Wales often carried Slate but Reindeer then went where ever there was a cargo, with a number of return trips to Runcorn with clay.

Reindeer often put in to avoid gales but was dis-masted in 1853. The regular voyages continued until December 1874 when she sprang a leak in the Irish sea 10 miles off Bardsey Island and sank, the crew were saved.

## 2.0 Index

| <b>2.1 Table of Contents</b>  | <b>Page No.</b> |
|---|-----------------|
| <b>1.0 Abstract</b> -----   | 3               |
| <b>2.0 Index</b> -----  | 4               |
| 2.1 Table of Contents   | 4               |
| 2.3 List of Pictures  | 5               |
| 2.4 Contributors  | 5               |
| 2.5 Abbreviations   | 5               |
| <b>3.0 Introduction</b> -----                                       | 6               |
| <b>4.0 Background</b> -----   | 7               |
| <b>5.0 Research Methodology</b> -----                               | 8               |
| <b>6.0 Results</b> -----  | 9               |
| <b>7.0 Analysis</b> -----   | 21              |
| <b>8.0 Conclusions &amp; Recommendations</b> -----                  | 23              |
| <b>9.0 References</b> -----   | 24              |
| <br><b>Appendices:</b>  |                 |
| <b>Appendix A – LR entries for Reindeer</b> -----                   | 25              |
| <b>Appendix B – Time line for Reindeer</b> -----                    | 26              |
| <b>Appendix C - Mercantile Navy List for Reindeer 10635</b> -----   | 49              |
| <b>Appendix D - Appropriation Book Entry &amp; Crew Lists</b> ----- | 50              |
| <b>Appendix E - Locations of Ports</b> -----                        | 51              |
| <b>Appendix F - Measures used and cargo explanation</b> -----       | 54              |

## 2.3 List of Pictures

## Page No.

|  |       |    |
|--|-------|----|
| Front Cover: A Schooner                    | ----- | 1  |
| Fig. 1 Measures used for dry and wet goods | ----- | 54 |
| Fig. 2 Granite setts                       | ----- | 55 |
| Fig. 3 Sett maker                          | ----- | 55 |
| Fig. 4 Map of Ireland showing Ports        | ----- | 56 |
| Fig. 5 Map of Wales showing Ports          | ----- | 57 |
| Fig. 6 Map of France showing Ports         | ----- | 57 |
| Fig. 7 Map of United Kingdom showing Ports | ----- | 58 |

## 2.4 Contributors

MADU

## 2.5 Abbreviations

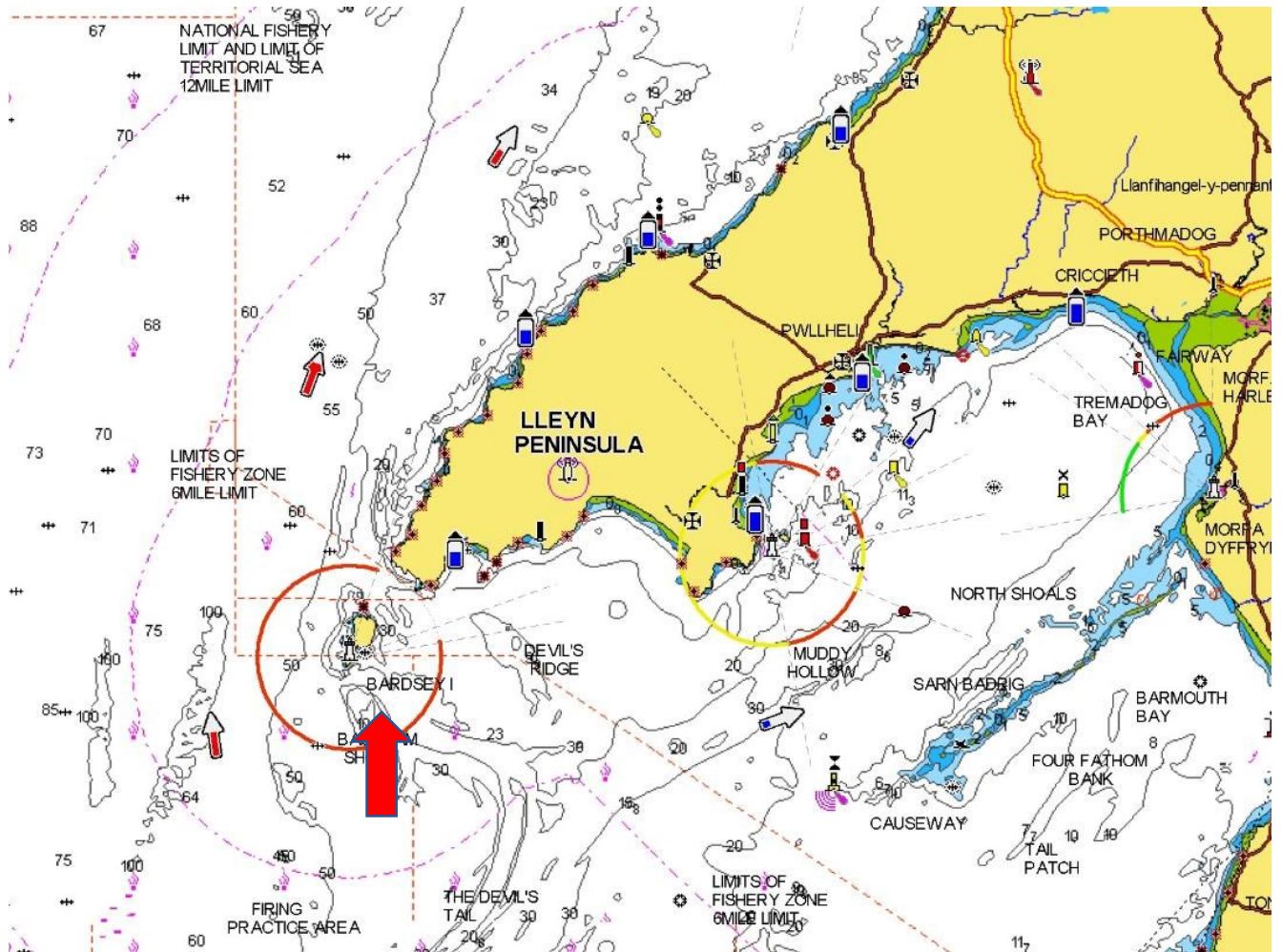
|      |  |
|------|--|
| LR   | Lloyds Register of shipping                            |
| BNA  | British Newspaper Archives                             |
| FSM  | Shipwrecked Fishermen and Mariners' Benevolent Society |
| MADU | Malvern Archaeological Diving Unit                     |
| MNL  | Mercantile Navy List                                   |
| NAS  | Nautical Archaeology Society                           |
| NAW  | National Archives of Wales                             |
| NPRN | National Primary Resource Number                       |
| OS   | Ordnance Survey  |
| WNL  | Welsh Newspapers on Line                               |
| w/e  | Weekending   |

### 3.0 Introduction

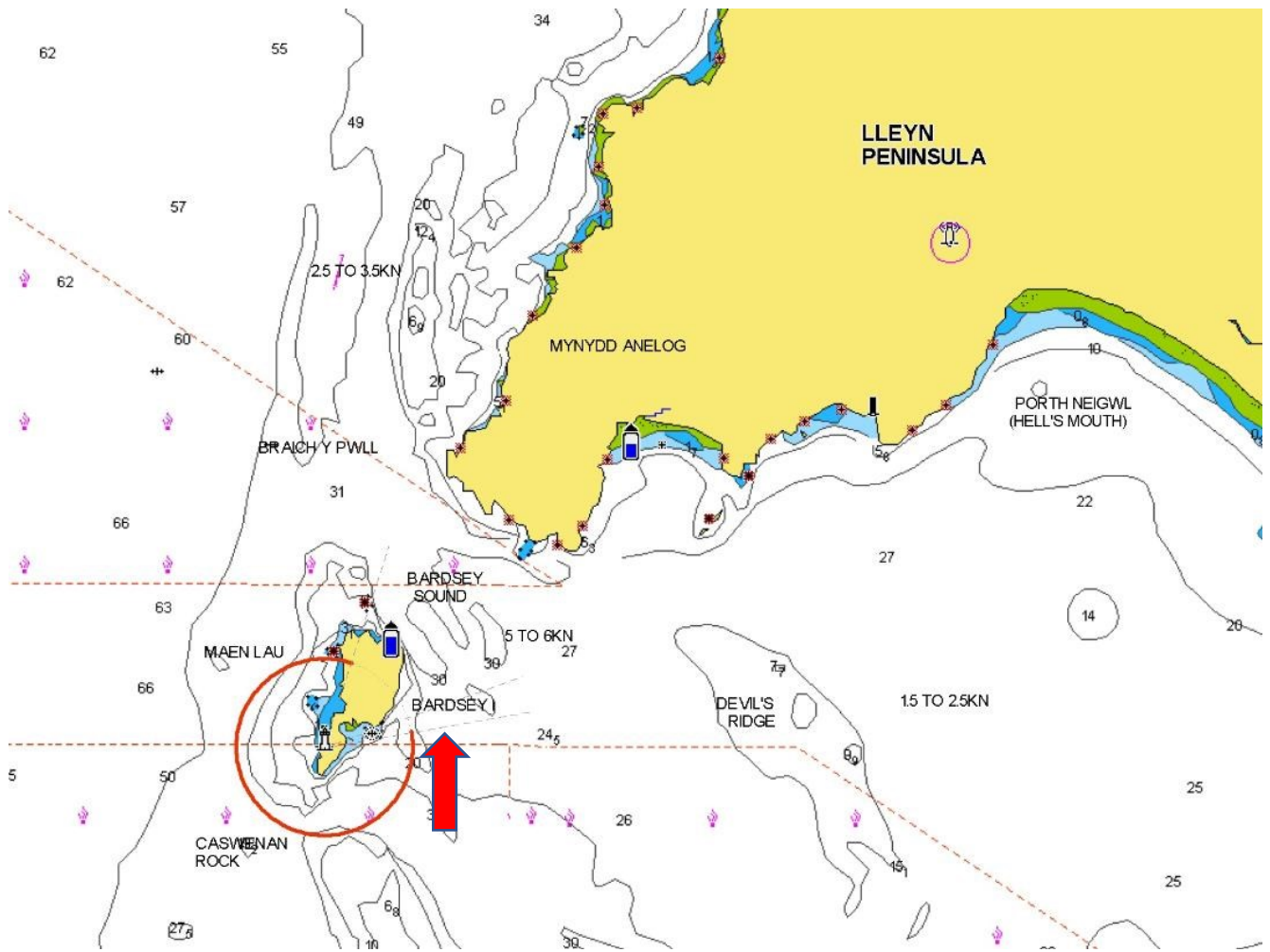
1. I selected Reindeer to research because the project was finishing, she looked to have had a lifetime of 3 years, so I had time to complete the research and wished to see how much information I could find about her and I wanted to find out what happened and I wanted to discover:
2. The dimensions of the vessel, although for this period of time apart from the draught, they would have only been recorded in on line information if the Lloyd's survey was available or the vessel had been advertised for sale in a surviving newspaper. Who the builder was and when she was built and any other information available about her.
3. Information concerning the voyages, cargo's, any events affecting the vessel, details of its masters, crew and owners.
4. To find out the sequency of events leading up to the loss of the vessel, whenever that was and the event in 1874.
5. To discover the cause of the event in 1874 and if the vessel survived, the cause of its eventual loss.
6. The events that happened after the incident in 1874 and up to and after its loss if it survived.
7. If there were any previous research of the vessel for the 1874 incident and its story.
8. If there was a wreck site for Reindeer and if it had been identified, dived and recorded.
9. If any salvage of the vessel and its cargo had been carried out
10. If any previous reports had been produced for the Reindeer.

## 4.0 Background

When I started this project it was reported Reindeer was a wooden schooner of 75 tons built in 1871, registered at Nefyn, had foundered and been abandoned at St Tudwals, 10' NNW of Bardsey Island on 20<sup>th</sup> October 1874.

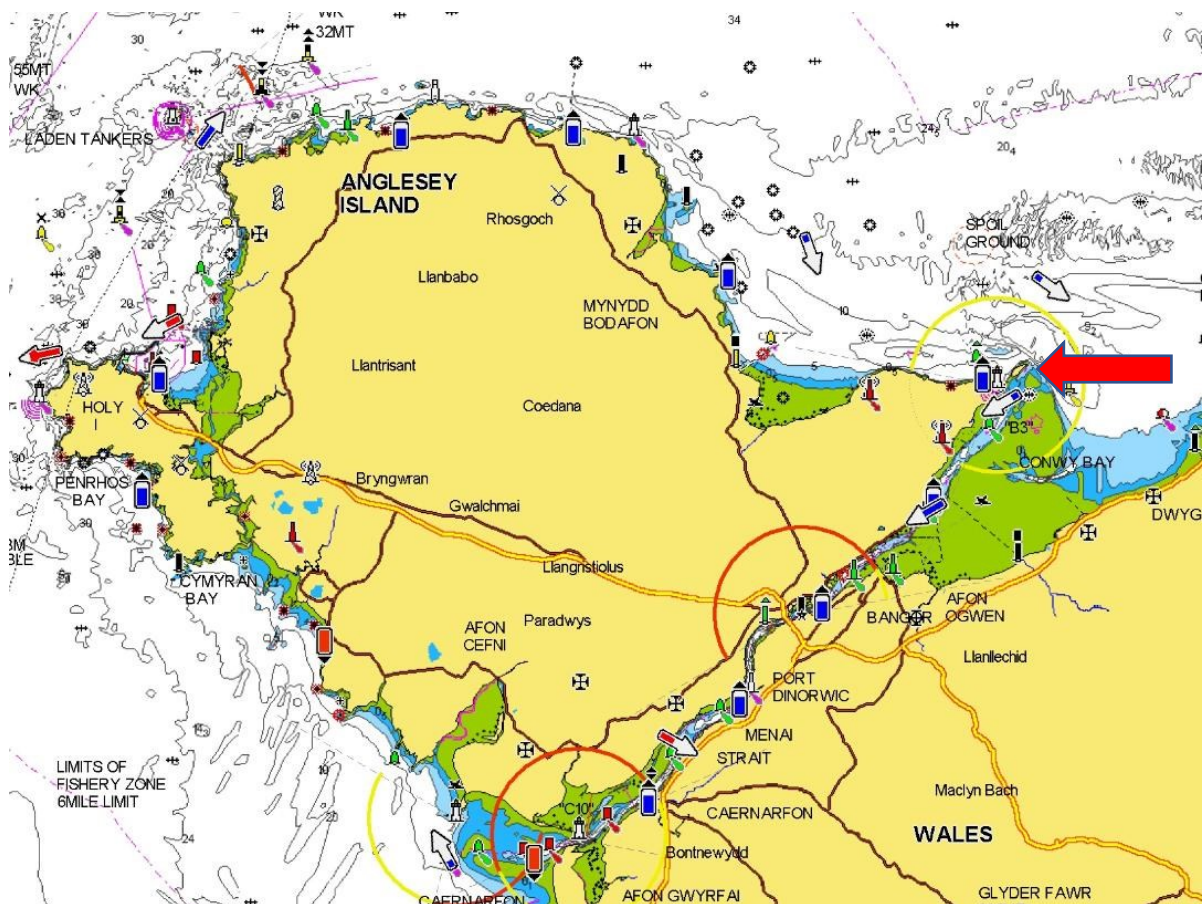
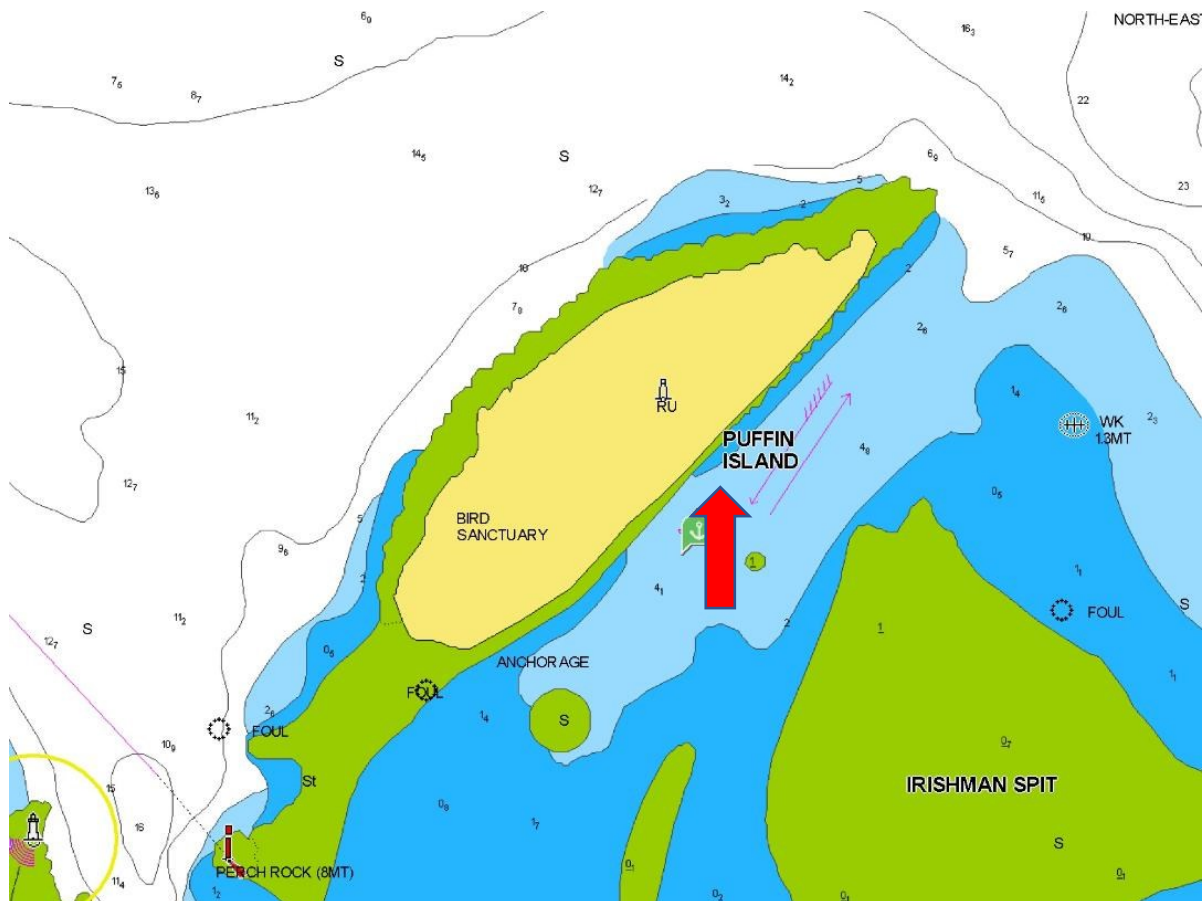


Bardsey Island and Llyn Peninsular



Bardsey Island





Puffin Island & Anglesey

## 5.0 Research Methodology

I used a Microsoft Pixel laptop with access to my home internet running windows 10 operating system. I also used my Apple I pad for research when I was away from the laptop and to assist in transcribing reports from the British newspaper archives. The new internet provider has now connected my home by a fibre connection so it is very much faster. The Lap top uses bling search engine but I also use Goggle which produces less advertisements and less Americanised content.

I searched Lloyds Register of Shipping ( LR ) for "Reindeer " looking for details of her dimensions, master, builders and owners from 1841 with a match. I then searched yearly until 1874.

I searched LR ships, plans and survey reports for "Reindeer" with no match.

I searched the Crewlist Project for " Reindeer" looking for her official number and links to MNL, appropriation book, crew lists, owner and master with a match. I followed the links for crew lists and found matches.

I searched The British Newspaper Archives (BNA) for "Reindeer Hughes", "Reindeer Griffiths", "Reindeer Griffith", "Reindeer Nevin", "Reindeer", and "Schooner Reindeer" looking for sailings, arrivals, a launch, owners, builders, mishaps and any details of her loss and found a number of matches. The searches were a year at a time to save time and avoid mistakes in recording the wrong year. I searched "Reindeer Nevin" after I saw a entry with Reindeer of Nevin, Griffiths and found some additional matches including where Reindeer had lost both masts but the master's name was not included.

I searched Welsh newspapers on line for "Reindeer Hughes" and "Reindeer Griffiths" looking for sailings, arrivals, a launch, owners, builders and any details of her loss and found a number of matches.

I searched Coflein site for "Reindeer" looking for any details of the wreck and a chart with a match.

I searched wreckeu site for "Reindeer" looking for any details of the wreck with no matches.

I searched on Google for "Schooner Reindeer of Pwllheli" and found matches in Rhiu.com for her builder and master Hugh Griffiths. In Geni for John Griffiths the mate in 1845 and the National Archives a link for account books for Reindeer.

I searched the Lifeboat archive for "Reindeer" to discover if the crew had been rescued by a lifeboat when she was ashore on Puffin Island or when she sank near Bardsey Island with no match.

## 6.0 Results

|              |              |  |       |  |
|--------------|--------------|--|-------|--|
| Vessel       | Name/s       | Reindeer   |       |  |
|              | Type         | Schooner   |       |  |
|              |              | Cargo  |       |  |
| Built        | Date         | 1841   |       |  |
|              | Launched     | August 1841  |       |  |
|              |              |  |       |  |
|              | Builder      | Richard Davies   |       |  |
|              |              | Nevin  |       |  |
| Construction | Materials    | Wood   |       |  |
|              | Decks        | one  |       |  |
|              | Bulkheads    | none   |       |  |
| Propulsion   | Type         | Sail   |       |  |
|              | Details      | Fore and aft rigged                                      |       |  |
| Engine       | Details      | N/A  |       |  |
|              |              |  |       |  |
|              |              |  |       |  |
|              |              |  |       |  |
|              | Boilers      |  |       |  |
| Drive        | Type         |  |       |  |
|              | Number       |  |       |  |
| Dimensions   | Length       | Unknown ft   | ins   |  |
|              | Beam         | Unknown ft   | ins   |  |
|              | Draught      | 10 ft  | 0 ins |  |
| Tonnage      | Gross        | 75   |       |  |
|              | Net          |  |       |  |
| Owner        | First        | Roberts & Co   |       |  |
|              |              | Bangor   |       |  |
|              | Last         | Hugh Griffith  |       |  |
|              |              | Nevin, Caernarvonshire                                   |       |  |
|              | Others       |  |       |  |
| Registry     | Port         | Nefyn, Caernarvon, Pwllheli                              |       |  |
|              | Flag         | British  |       |  |
|              | Number       | 10635  |       |  |
| History      | Routes       | Wales, United Kingdom and France                         |       |  |
|              |              |  |       |  |
|              | Cargo        | Slates, oats, grain, wheat, coal, boulders, flints, Clay |       |  |
| Final Voyage | From         | Port Dinorwic  |       |  |
|              | To           | London   |       |  |
|              | Captain      | Hugh Griffiths   |       |  |
|              | Crew         | Unknown – Likely to be 3                                 |       |  |
|              | Passengers   | None   |       |  |
|              | Cargo        | Slates   |       |  |
| Wrecking     | Date         | 20 <sup>th</sup> October 1874                            |       |  |
|              | Location     | Off Bardsey Island                                       |       |  |
|              | Cause        | Sprang a leak  |       |  |
|              | Loss of life | None   |       |  |
|              | Outcome      | Abandoned and Foundered                                  |       |  |

**Coflein web site**

The REINDEER was a 75nt, wooden schooner built at Caernarfon in 1841. At time of loss, the vessel was owned by Hugh Griffiths, Caernarfon. It was carrying a cargo of roofing slate from Port Dinorwic to London on 20 October 1874 when it sprung a leak and was subsequently abandoned 10 miles north-northwest of Bardsey.

Sources include:

Board of Trade Wreck Return 1874 Appendix Parts I-IV

Larn and Larn Shipwreck Database 2002

Wynne-Jones, I, 2001, Shipwrecks of North Wales, 4 ed, pg30

Maritime Officer, RCAHMW, May 2008

**Kerry Evening Post. - Saturday 02 December 1843****SUDDEN DEATH.**

The ship-master, whose sudden death briefly recorded in our last, was Mr. Robert Hughes, of the schooner Reindeer, of Nevin. On Tuesday last Mr. Hughes landed just opposite the Samphire islands, near which his vessel was then at anchor, and proceeded through the fields to the pilot's bouse at Tallaght. While going there he complained of a sudden indisposition, and on entering the house he threw himself on a bed. After lying there for less than half an hour, he expired; his death was caused by the rupture of a blood vessel. Justin Supple, Esq., coroner, held an inquest the body, and the verdict of the jury was, Death by the visitation of God."

The deceased was a Welshman and married; the Reindeer was freighted by Mr. Edward Stack, of this town, with oats for London, and about to sail immediately, but she remains now here until the owners appoint a new master.

**Limerick Reporter - Tuesday 03 September 1844****GALWAY EXPORTS**

Reindeer, Griffiths, for London – 500 qrs oats, E. Burl, 20 tons provisions, W. Greaves.

**Shipping and Mercantile Gazette - Wednesday 19 March 1845**

TRESCO— Scilly. Arrived [March 14] from Thomas, Fisher, Newport Cygnet, Boyce, Yarmouth Reindeer, Griffiths, Liverpool We have had very strong easterly winds for the last week, with hard frost. All the windbound vessels have rode safely.

**Gloucester Journal - Saturday 19 June 1847**

PORT OF GLOUCESTER. IMPORTS, From June 11, to June 18, 1847.

From Montrose: the Reindeer, of Nevin, Griffiths, 80, with 571 qrs wheat for J. and C. Sturge.

**Gloucester Journal - Saturday 03 July 1847**

PORT OF GLOUCESTER. EXPORTS, From June 25, to July 2, 1847.

For the Reindeer, with 111 tons salt and 2 tons bricks from Gopsill Brown.

**Liverpool Mail - Saturday 18 December 1847**

The Reindeer schooner of Nevin was driven on shore during the night at Puffin Island. Crew saved.

**Morning Advertiser - Monday 20 December 1847**

Nov.20; - The Reindeer (schooner) of Nevin was driven on shore on Puffin Island, 17th inst. Crew saved.

**Worcestershire Chronicle - Wednesday 22 May 1850**

PORT OF GLOUCESTER.

Imports of Corn, from May 11 to May 17, 1850.

From London : the Reindeer, of Nevin, tons oil-cake, 227 qrs. barley, and 248 qrs. wheat, for J. P. Kimberley.

### **Shipping and Mercantile Gazette - Friday 01 November 1850**

PWLLHELI—Oct. 31 2 30 p.m.— S.W., moderate. Windbound at St Tudwall's Roads—The Laura, Davies; Surprise, Thomas ; and Nymph, Thomas; all three from Teignmouth; Mermaid, Roberts, from Charlestown; John Evans, Griffiths, from Shoreham; *Reindeer, Griffiths*; and Eliza Brindley, Jones; both from Poole ; all for Runcorn. Don Quizote, Francis, from Fecamp for Liverpool; and several others, names not as yet ascertained, riding all well.

### **Morning Post - Wednesday 19 October 1853**

Cardiff, Oct. 17.— The schooner Reindeer, of Nevin, from Stockton to Britonferry, has arrived in Penarth Roads, having had both masts carried away off Padstow on the 14th.

### **Shipping and Mercantile Gazette - Saturday 18 February 1854**

PORTHINLLAEN—Feb. 16 : S.W., moderate, with drizzling rain. Yesterday we experienced a violent storm from N.N.W. In the bay, 16—*The Reindeer, Griffiths*, from Bangor for London. Gomer, Jones, from Neath for Caernarvon. The Endeavour, Davies, from Aberdovey for Liverpool; carried away her windlass. All the above slipped from the bay, and run thence to the pier.

### **Cork Constitution - Tuesday 23 June 1857**

Cork Imports

Reindeer, Griffiths, from Kirkcaldy, 565 qrs. wheat.

### **Cork Constitution - Tuesday 29 September 1857**

Cork Imports

Reindeer, Griffiths, from London, a quantity of hemp, 185 casks provisions.

### **London Evening Standard - Monday 28 June 1858**

Fatal Accidents on the River. — On Saturday morning, between nine and ten a lad named John Connell fell from the Reindeer, off the West India Dock entrance, and was drowned.

### **Shipping and Mercantile Gazette - Tuesday 08 October 1872**

LLANAELHAIARN—Oct. 6: A.M.— SW; p.m.— Stormy, rain. The weather for the last fortnight has been very unsettled and squally, with rain. Ready for sea—The Reindeer, Griffiths, for Bristol.

### **Lloyd's List - Thursday 22 October 1874**

NEVIN. Oct. 21., 12.10pm. – REINDEER (Schr) of this port, FROM Port Dinorwic to London with slates, sunk off Bardsey Island yesterday ; crew saved.

### **Captains that were buried (Or a memorial) at Nefyn public cemetery**

GRIFFITH, Cpt. Hugh. (schooner REINDEER), Nefyn, (d) October 20, 1877, 63 years old.

### **Reindeer schooner**

1840-74: account book

Gwynedd Archives, Caernarfon Record Office

Ref. XM/4889/54

NRA 30711 Hughes

### **John Griffiths**

Birthdate: March 22, 1820

Birthplace: Morfa Nefyn, Caernarvonshire, Wales (United Kingdom)

Death: March 17, 1890 (69)

82 Highfield St, Liverpool, Lancashire, England (United Kingdom)

Immediate Family:

Son of William Griffiths and Eleanor Davies

Husband of Jane Williams

Father of Sydney Griffiths; Catherine Griffiths; Jane Griffiths; Ann Griffiths and William Griffiths

Brother of Hugh Griffiths; Eleanor Griffiths; Robert Griffiths and Sydney Griffiths

Service record of John Griffiths: 24 Mar- Dec 1835: Boy on Newhope (40t of Pwllheli) 1836-38 Boy on the {name indecipherable} of Pwllheli (50t) in coasting trade. 1839: Seaman on Madryn (75t of Pwllheli). 1840-41: Seaman on Diligence of Pwllheli (130t). 1841-45: Mate on Reindeer (80t) of Pwllheli. In 1845 he was described as a seaman, height 5ft 3, hair brown, complexion dark, eyes grey, no marks. When unemployed he resided at Nefyn and could write. Master of Ellen Ann of Pwllheli (32t), 1846-51, (rotation number in 1847 was 102). In 1851 sailed on ship 799 of Caernarfon. On 27 Jan 1851 He resided at Edern. The witness was Griffith Roberts of Edern. CS:40532 was issued at Pwllheli on 13 May 1851. Died 17 March 1890 at Highfield Street, Liverpool.

## **Samuel Roberts**

Of PLAS LLWYD BANGOR

## **The North Wales Chronicle and Advertiser for the Principality 18<sup>th</sup> May 1867**

SHIPWRECKED FISHERMEN AND MARINERS ROYAL BENEVOLENT SOCIETY.—The twenty-eighth annual meeting of this most benevolent Institution, established under the authority of the legislature to represent the charity of the British public to shipwrecked sailors of all nations cast upon the coasts of the United Kingdom, was held at Willis's Rooms, King-street, St. James's— Admiral the Earl of



Shrewsbury and Talbot. C.B, in the unavoidable absence of His Grace the Duke of Marlborough, President of the society, in the chair. The noble chairman with great clearness and much feeling put before the meeting the objects of the society, and introduced the secretary, Mr. Lean, who read the report, wherein it was stated that, during the past year the society had relieved 7,087 shipwrecked persons, natives and foreigners, and 4,134 widows and orphans of fishermen and mariners, making a total, since the formation of the society in 1839, of 159,939! The report concluded with an earnest appeal to the nobility, gentry, and public at large, for help to carry out the great objects of the society. We may add, that contributions will be thankfully received by our esteemed townsmen Messrs. Samuel Roberts, Plas Llwyd, and T. T. Parry, Bodifyr, Hon. Agents for the society.

### **The North Wales Chronicle and Advertiser for the Principality 1<sup>st</sup> April 1865**

THE BANGOR MUTUAL SHIP INSURANCE SOCIETY. The annual General Meeting of this Society was held at the Society's Offices, Plas Llwyd, in this city, on Tuesday last, to receive the Report of the Directors, and a statement of the Society's accounts for the year 1864, Ac. Amongst those present, we noticed Peter Ellis, Esq., Carnarvon; J. F. Jones, and W. B. Buckingham, Esqrs., Port Dinorwick; O. Jones, Esq., tanner; T. F. Evans, Esq., Mona Lodge, J. H. Treweek, Esq., Capt. W. Thomas, Mr. R. Hughes, and Capt. W. Roberts, of Amlwch, Capt. Williams (Heir Apparent), Mr. Meshach Roberts, Mr. Z. Roberts, Mr. T. Williams, Captain Ud. Jones, Captain Thomas Jones, and Captain Owen Owens, of Bangor Mr. J. F. Jones, Mr. Treweek, of Cemaes, &c. The Chair, in the unavoidable absence of W. Pritchard, Esq., was ably filled by Mr. Meshach Roberts, who, after reading a copy of the circular convening the meeting, called on the Secretary to read the Report and Balance sheet. According to the Report, it appears that the Society is still favourably progressing, the number of vessels on the Society's books on that day, being 335, insurable value thereof amounting to £186,892 13s.; shewing an increase of 11 in number of vessels, and £ 6,087 12s. 6d. in insurable value during the last 12 months, after deducting the 15 vessels lost, sold, &c., which, together with reduced values, &c., amounted to £ 11,244 10s. The Balance Sheet shewed that the total calls during 1864, including the £1 per cent. annual subscription, amounted to £4 per cent. 38 claims for partial losses were paid, amounting to £1,998 12s 10d.; and 11 claims for total losses, together with £100 on account of the 12th claim were also paid, which amounted to £5984. The Report and Balance Sheet were unanimously adopted, and will be printed for circulation among the members, as usual. The following were the Directors retiring by rotation, and who were all re-elected :—Mr. J. F. Jones, Port Dinorwic, Mr. Thomas T. Parry, Bangor; Mr. Samuel Roberts, Bangor; Mr. Wm.

Thomas, Amlwch; and Mr. Evan Evans, Bangor. After transferring £1500 from the General to the Insurance Fund, as recommended by the Directors, electing Mr. Thos. Jones, Port Penrhyn, as the Society's auditor (Mr. Gregory being also elected by the Directors), and a vote of thanks to the Chairman and Officers of the Society, the meeting terminated.

### **The North Wales Chronicle and Advertiser for the Principality 16<sup>th</sup> September 1865**

THE "MONOPOLY" OF THE SHIPPING TRADE AT PORT PENRHYN. A good deal of anonymous indignation has recently been indulged in by certain parties in reference to the alleged monopoly, of the shipping trade at Port Penrhyn by the Agents of Col. Pennant, we have been requested to insert the following document, which, we think, will convince all impartial persons of the utter groundlessness of these mischievous charges. One or two nameless individuals, from motives which we can understand, but which the said writers would disavow, as a matter of course, have stated plainly and distinctly independent shipowners have not anything like fair play that the trade is in the hands of certain Agents, who themselves own the vessels, and who having the sole management of the harbour, employ their own ships in preference to anybody else's. This is, indeed, a grave charge to prefer; and on Col. Pennant hearing of it, he wished to ascertain the truth or the falsehood of the accusation, and on the 10th of August last he wrote to the shipowners of the Port to ask had the owners of ships any grievance to complain of. To this enquiry no less than 78 shipowners, &c, returned to me an answer that they had no complaint to make. The public, therefore, must decide for themselves which they will believe—the entire shipping interest of the Port, or the statements of an acrimonious and anonymous scribbler in the columns of the Carnarvon Herald. If the Shipowners have no complaint to make, why should Observer be dissatisfied ? We give the document entire!

Col. PENNANT wishes to know whether the Owners of Ships trading at Port Penrhyn have any complaint to make in regard to the selection of ships for freight ?

We, the undersigned, being Masters and Owners of Vessels trading at Port Penrhyn, have no complaint to make to the Honble. Col. Pennant.

Evan (X mark) Owen, master and owner of the Victoria.

Edw. (X mark) Owen, master & part owner of the Express

Richard Jones, master and part owner of the Sarah Jane.

John Jones, master of the Richard,

Robert Owen, the Jane.  
 William Sutherland, of the flat Eleanor.  
 William Evans Sluice.  
 John Matthews, schooner Oulton.  
 Richard Lloyd, smack St. Patrick.  
 Richard Rowlands, schooner Dewi Wyn.  
 John Evans, schooner Elizabeth.  
 Robert Hughes, Admiral Nelson.  
 William Owens, Albion.  
 Samuel Roberts, shipowner.  
 Owen Owens, shipowner.  
 Richard (X mark) Hughes, shipowner.  
 Thomas Thomas Parry, shipowner.

Samuel Roberts is listed in the crewlist as owner of a number of vessels.

### Crewlist

Owners whose name is ROBERTS and forename/initial is SAMUEL

| Surname                 | Forename                    | Address                 | Ship and ON | Port | From To | Archive |
|-------------------------|-----------------------------|-------------------------|-------------|------|---------|---------|
| Reference               | Links                       |                         |             |      |         |         |
| ROBERTS                 | SAMUEL                      |                         |             |      |         |         |
| BANGOR                  | JAMES & MARIA,              | 10619BEAUMARIS, 24/1854 | 1/1/1863    |      |         |         |
| 30/6/1863               | Anglesey Archives           |                         | W/DB/202    |      |         |         |
| PENLOAN, BANGOR         | JAMES & MARIA,              | 10619BEAUMARIS, 24/1854 | 1/1/1869    |      |         |         |
| 30/6/1869               | Anglesey Archives           |                         | W/DB/202    |      |         |         |
| BANGOR                  | DOROTHEA, 43869             | BEAUMARIS, 10/1862      | 1/7/1870    |      |         |         |
| 31/12/1870              | Anglesey Archives           |                         | W/DB/112    |      |         |         |
| PLAS LLWYD, BANGOR      | ARTHUR WYATT, 21271         | BEAUMARIS, 18/1858      |             |      |         |         |
| 11/7/1871               | 1871 Anglesey Archives      |                         | W/DB/50     |      |         |         |
| BANGOR, CAERNARVONSHIRE | ABEL, 10613                 | BEAUMARIS, 5/1854       |             |      |         |         |
| 1/1/1871                | 30/6/1871 Anglesey Archives |                         | W/DB/2      |      |         |         |
| PLAS LLWYD, BANGOR      | ANGORA, 24136               | BEAUMARIS, 17/1862      | 1/1/1872    |      |         |         |
| 30/6/1872               | Anglesey Archives           |                         | W/DB/37     |      |         |         |
| PLAS LLWYD, BANGOR      | ABEL, 10613                 | BEAUMARIS, 3/1854       | 1/1/1873    |      |         |         |
| 1873                    | Anglesey Archives           |                         | W/DB/2      |      |         |         |

PLAS LLWYD, BANGOR, NORTH WALES DOROTHEA, 43869 BEAUMARIS,  
10/1862 21/5/1873 1873 Anglesey Archives W/DB/112

BANGOR CAMBRIA, 27730 BEAUMARIS, 18/1860 1/1/1873 30/6/1873  
Anglesey Archives W/DB/68

PLAS LLWYD, BANGOR, NORTH WALES DOROTHEA, 43869 BEAUMARIS,  
10/1862 1/1/1873 30/6/1873 Anglesey Archives W/DB/112

BANGOR DOROTHEA, 43869 BEAUMARIS, 10/1862 1/7/1873  
31/12/1873 Anglesey Archives W/DB/112

## 7.0 Analysis

The original date for the building of the Reindeer was incorrect she was built 30 years earlier, so more to do in the project, and plenty to record, if generally mishap free.

The Reindeer was sailed cautiously putting in to avoid adverse weather, in fact the ports she called at and some of her passages mirror ones I make today along the south coast to the west country in my own sailing boat. Reindeer only had two recorded mishaps in her 38 years before she sank, driven ashore on Puffin Island in 1847 and loss of both masts in 1853. This for the length of time in the 19<sup>th</sup> century was unusual and must have reduced her operating costs, but whether the reduced number of sailings made her less profitable is unknown. She travelled to many and varied Ports with little routine except slates to London and returning to Runcorn or Liverpool. She seems to have taken any cargo available when she was in port and is not recorded often in ballast. The records for sailings are not complete but it appears she may have been laid up in some winters since the absence of sailing in the first month or two of a year is common.

The BNA produced almost all the records of voyages by Reindeer , her mishaps, the death of the master Robert Hughes, and with WNL producing the remainder. A Google search produced details of Hugh Griffiths death and burial, John Griffiths, who was a mate on Reindeer and may have been the master Hugh Griffiths brother in an on line family tree. It also brought up the existence of account books in the archives.

A visit to the Gwynedd Archives, Caernarfon Record Office to see the account book for Reindeer from 1840 to 1874 may supply further details. Also the crew lists held by the same archives, only 1870 may be held at the National Archives. These may provide more detail of the stranding on Puffin Island and Reindeer's loss.

The death of John Connell in 1858 may have been from this Reindeer since she was in London about this time but there is no corroborating evidence.

Samuel Roberts appears to be the first owner of Reindeer but there is no direct evidence of a connection between them except Roberts on the LR. He was the local agent for the FSM, Director of the Bangor Mutual Ship Insurance Society and a ship owner. The crew list records only relate to Beaumaris where the crew lists have been transcribed

The appendix F gives an explanation of the measures used for dry and wet goods in the times before modern units of measurement. I had found the diagram showing different sized barrels from Tun down to roundlet previously which was used to describe wet and dry goods measures. I had been unable to discover what a quarter (qrs) related to, with what was described mainly as corn, which included all the grains, hops, oats and beans. The measure a quarter was a quarter of a tun barrel, later a ton.

The numbers of visits of Reindeer to Poole raised my interest as it is still an agricultural area but in the 19<sup>th</sup> century it exported ball clay for pottery including to Wedgewood and still exports 120,000 tons yearly. The return voyage for Reindeer were to Runcorn or Liverpool where the clay was loaded onto barges for transport to the Midlands and Northern England. Some was used to make clay pipes a consumable item until the 20<sup>th</sup> century.

The visits to Port Nant at Nant Gwrtheyrn, led to the explanation of the cargo "setts", I had seen on many vessels and were granite squares or rectangles used as cobble stones on the expanding streets of Victorian Britain.

## **8.0 Conclusions & Recommendations**

I have spent about 45 hours on this project with about 95% of the time spent on line. Reindeer is a common name for a vessel and produced hundreds of possible matches and needed the advanced search to reduce the number to a manageable size to search.

There are insufficient details to trace any family for the two masters in Wales with their names being so common on a genealogy site.

There is no wreck site known for the Reindeer and the area she sank is beyond the limits of recreational diving.

The project has answered most of my objectives but not the vessels dimensions or any details of the crew, and only brief details of the two masters. Some of these details are in the crew lists but not available on line. I may have found the original owner in Samuel Roberts but this is not corroborated.

The story of the Reindeer is fairly routine with so few mishaps it fails to generate great interest and with so little detail of the three mishaps including the sinking, so is not suitable for further publication.

## 9.0 References

<https://www.britishnewspaperarchive.co.uk/>

<https://www.crewlist.org.uk/>

<https://coflein.gov.uk/>

<https://discovery.nationalarchives.gov.uk/>

<https://www.geni.com/people/John-Griffiths>

<https://www.geographicguide.com/>

<https://www.google.com/>

<https://hec.lrfoundation.org.uk/>

<https://www.navionics.com/>

<https://newspapers.library.wales/>

<http://ontheworldmap.com/>

<https://www.peoplescollection.wales/>

<https://www.pinterest.co.uk/>

<http://www.poolemuseum.org.uk/>

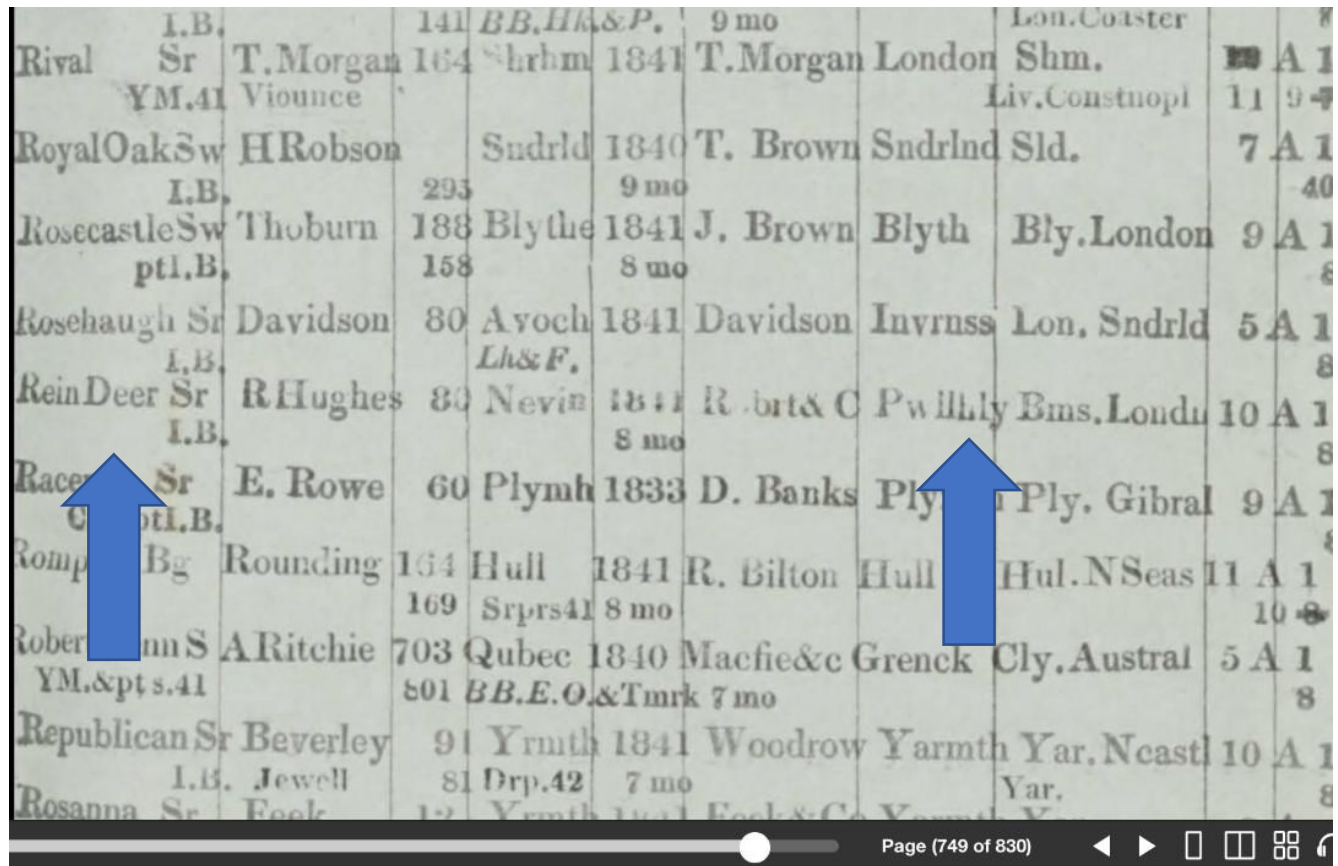
<http://www.rhiw.com/>

<https://en.wikipedia.org/>



## Appendices:

### Appendix A – Table of Lloyd's Registers entries for the *Reindeer*



|               |               |           |         |                  |             |             |             |                |        |
|---------------|---------------|-----------|---------|------------------|-------------|-------------|-------------|----------------|--------|
| Rival         | I.B. Sr       | T. Morgan | 164     | BB. Hk & P.      | 9 mo        | T. Morgan   | London      | Shm.           | 11 A 1 |
|               | YM.41         | Viounce   |         |                  |             |             |             | Liv. Constnopl | 11 9 4 |
| Royal Oak Sw  | H Robson      | Sndrld    | 1840    | T. Brown         | Sndrld      | Sld.        |             |                | 7 A 1  |
|               | I.B.          |           | 293     |                  | 9 mo        |             |             |                | -40    |
| Rosecastle Sw | Thoburn       | 188       | Blythe  | 1841             | J. Brown    | Blyth       | Bly. London |                | 9 A 1  |
|               | ptl. B.       | 158       |         | 8 mo             |             |             |             |                | -8     |
| Rosehaugh Sr  | Davidson      | 80        | Avoch   | 1841             | Davidson    | Invruss     | Lon. Sndrld |                | 5 A 1  |
|               | I.B.          |           | Lh & F. |                  |             |             |             |                | 8      |
| Rein Deer Sr  | R Hughes      | 80        | Nevin   | 1841             | Robert & Co | Pwllhely    | Bms. London |                | 10 A 1 |
|               | I.B.          |           |         | 8 mo             |             |             |             |                | 8      |
| Racer         | Sr            | E. Rowe   | 60      | Plymh            | 1833        | D. Banks    | Ply         | Ply. Gibr      | 9 A 1  |
|               | Utl. B.       |           |         |                  |             |             |             |                | 8      |
| Romp          | Bg            | Rounding  | 164     | Hull             | 1841        | R. Bilton   | Hull        | Hul. N Seas    | 11 A 1 |
|               |               |           | 169     | Srprs            | 41          | 8 mo        |             |                | 10 8   |
| Robert        | nm S          | A Ritchie | 703     | Qubec            | 1840        | Macfie & Co | Grenck      | Cly. Austral   | 5 A 1  |
|               | YM. & pts. 41 |           | 801     | BB. E. O. & Tmrk | 7 mo        |             |             |                | 8      |
| Republican Sr | Beverley      | 91        | Yrmth   | 1841             | Woodrow     | Yarmth      | Yar. Ncast  |                | 10 A 1 |
|               | I.B. Jewell   |           | 81      | Drp. 42          | 7 mo        |             |             |                | 8      |
| Rosanna Sr    | Feek          | 12        | Yrmth   | 1841             | Feek & Co   | Yarmth      | Yar.        |                | 8      |

#### Lloyd's Register of Shipping 1841

by Lloyd's Register Foundation, Heritage & Education Centre



1841 Rein Deer schooner, master R Hughes, 80 tons, built in 1841, at Nevin, launched August 1841, with iron bolts, owner Robert & Co, registered at Pwllhely, surveyed August 1841 and classified A1 for 10 years, sailing Beaumaris to London

1842, 1843 No changes

1844 Master amended to H Griffiths, new survey May 1845, now sailing Liverpool coaster

1846, 1847 No changes

1848 damage repairs 1848, new survey February 1848

1849, 1850, 1851 No changes

1852, 1853 No entry

## **Appendix B – The Timeline for the *Reindeer***

### **1841**

August 29 1841 Porthdynllaen sailed Reindeer, Hughes

November 6 1841 Lynn sailed Reindeer, Hughes for Dublin

November 13 1841 Ramsgate put in Reindeer, Hughes from Lynn to Dublin

November 26 1841 Ramsgate sailed Reindeer, Hughes for Dublin

### **1842**

May 2 1842 Liverpool arrived Reindeer, Hughes from London

June 9 1842 Port Penrhyn, Bangor cleared out Reindeer, Hughes

August 7 1842 Port Penrhyn, Bangor arrived Reindeer, Hughes

September 4 1842 Port Penrhyn, Bangor cleared out Reindeer, Hughes

September 14 1842 London wharfs, Stanton's Lower arrived Reindeer, Hughes  
from Bangor

October 3 1842 London docks hauled out Reindeer 80, Hughes for Bristol

December 25 1842 Caernarvon cleared out Reindeer, Hughes

### **1843**

April 23 1843 Caernarvon arrived Reindeer, Hughes

June 18 1843 Caernarvon arrived Reindeer, Hughes

July 18 1843 London West India dock hauled in Reindeer, Hughes to load

July 25 1843 London customs house outwards Reindeer, Hughes for Liverpool

August 2 1843 Yarmouth IW arrived Reindeer, Hughes from London for Liverpool  
strong gales

August 23 1843 Liverpool arrived Reindeer, Hughes from London

September 10 1843 Caernarvon arrived Reindeer, Hughes

October 7 1843 London wharf Chamberlain's sailed Reindeer, Hughes for Tralee

November 4 1843 Ramsgate sailed Reindeer, Hughes for Tralee

November 20 1843 Tralee arrived Reindeer, Hughes from London

## **1844**

January 2 1844 Limerick sailed Reindeer, Roberts

January 21 1844 Deal arrived Reindeer, Roberts from Tralee

April 7 1844 Port Penrhyn, Bangor arrived Reindeer, Hughes from Liverpool

May 5 1844 Caernarvon sailed Reindeer, Griffiths

June 1 1844 Poole arrived Reindeer, Griffiths from London

June 22 1844 Porthdynllaen put in Reindeer, Hughes from Poole

June 28 1844 Runcorn arrived Reindeer, Hughes from Poole

July 7 1844 Port Penrhyn, Bangor arrived Reindeer, Hughes

July 31 1844 Port Penrhyn, Bangor sailed Reindeer, Griffiths for Galway

August 3 1844 Caernarvon passed through the Straits Reindeer, Griffiths from  
Bangor for Galway

August 29 1844 Falmouth passed by Reindeer from Teignmouth for Liverpool

September 3 1844 Galway sailed Reindeer, Griffiths for London - oats

September 16 1844 London entered inwards Reindeer 80, Griffiths from Galway  
Brenan

October 10 1844 Poole arrived Reindeer, Griffiths from Portsmouth

October 11 1844 Lymington arrived off Reindeer, Griffiths from Portsmouth for  
Charlestown

October 11 1844 Lymington sailed Reindeer

October 19 1844 Poole sailed Reindeer, Griffiths for London

October 28 1844 Milford put in Reindeer, Hughes from Poole for Liverpool

November 11 1844 Runcorn arrived Reindeer, Hughes from Poole

November 19 1844 Beaumaris arrived Reindeer, Griffiths from Liverpool

November 30 1844 Caernarvon sailed Reindeer, Griffiths for London

December 6 1844 Falmouth arrived Reindeer, Griffiths from Caernarvon

December 11 1844 Falmouth sailed Reindeer, Griffiths for London

December 29 1844 Falmouth sailed Reindeer, Griffiths for London

## **1845**

January 25 1845 London Customs House entered outwards Reindeer, Griffiths for  
Liverpool

February 8 1845 Porthdynllaen put in Reindeer, Griffiths from the English  
Channel for Liverpool

February 11 1845 Beaumaris windbound Reindeer, Griffiths from London for  
Liverpool

March 14 1845 Tresco, Scilly arrived Reindeer, Griffiths from Liverpool

March 26 1845 London Customs House entered inwards Reindeer, Griffiths from  
Liverpool

April 15 1845 Lymington arrived off Reindeer, Griffiths for westwards from  
London

April 16 1845 Lymington sailed Reindeer, Griffiths

April 22 1845 Charlestown sailed Reindeer, Griffiths for Liverpool

May 4 1845 Porthdynllaen sailed Reindeer, Griffiths

June 21 1845 Southampton arrived Reindeer, Griffiths from Newcastle

July 9 1845 Poole sailed Reindeer, Griffiths for Liverpool

September 7 1845 Portsmouth put in Reindeer, Griffiths from Wepra for London

September 15 1845 London Customs House entered inwards Reindeer, Griffiths  
from Wepra

October 9 1845 Portland Roads put in Reindeer, Griffiths from London for Bangor  
- gales

October 15 1845 Beaumaris passed by Reindeer, Griffiths from London for  
Bangor

December 1 1845 Port Penrhyn, Bangor sailed Reindeer, Griffiths – slates

December 2 1845 Caernarvon remain Reindeer, Griffiths for Hull

December 12 1845 Caernarvon passed through the Straits Reindeer, Griffiths for  
Hull

December 15 1845 At Milford Reindeer, Griffiths from Caernarvon for Hull

## **1846**

March 7 1846 Hull sailed Reindeer, Griffiths for Bristol

March 16 1846 Brixham, Torbay arrived Reindeer, Griffiths from Hull to Bristol

March 17 1846 Brixham, Torbay sailed Reindeer, Griffiths for Bristol

March 24 1846 Falmouth put in Reindeer, Griffiths from Hull to Bristol

March 30 1846 Bristol, Pill arrived Reindeer, Griffiths from Hull

April 10 1846 Newport, Mon sailed Reindeer, Griffiths for Liverpool

April 17 1846 Liverpool arrived Reindeer, Griffiths from Newport

April 26 1846 Port Penrhyn, Bangor arrived Reindeer, Griffiths

June 14 1846 Port Penrhyn, Bangor cleared out Reindeer, Griffiths – slates

June 18 1846 Port Penrhyn, Bangor cleared out Reindeer, Griffiths – slates

June 26 1846 Lynn arrived Reindeer, Griffiths from Bangor

July 27 1846 Off Lymington Reindeer, Griffiths from Newcastle for Dublin

August 17 1846 Port Penrhyn, Bangor arrived Reindeer, Griffiths from Liverpool

August 18 1846 Caernarvon arrived Reindeer, Griffiths from Dublin

October 8 1846 Port Penrhyn, Bangor cleared out Reindeer, Griffiths – slates

October 13 1846 Caernarvon passed through the Straits Reindeer, Griffiths from  
Bangor for London

October 17 1846 Porthdynllaen sailed Reindeer, Griffiths for London

October 19 1846 Milford put in Reindeer, Griffiths from Bangor for London

November 17 1846 London Customs House entered outwards Reindeer, Griffiths  
for Bangor

December 22 1846 Port Penrhyn, Bangor arrived Reindeer, Griffiths from  
. Liverpool

**1847**

April 4 1847 Port Penrhyn, Bangor cleared out Reindeer, Griffiths – slates

April 6 1847 Caernarvon remain Reindeer, Griffiths for London

April 12 1847 Caernarvon remain Reindeer, Griffiths for London

April 13 1847 Caernarvon passed through the Straits Reindeer, Griffiths for  
. London

May 10 1847 Hamburg sailed Reindeer, Griffiths for Arbroath

May 11 1847 Cuxhaven sailed Reindeer, Griffiths for Arbroath

May 16 1847 Arbroath arrived Reindeer, Griffiths from Hamburg - bones

May 25 1847 Arbroath sailed Reindeer, Griffiths for Montrose –grain

May 27 1847 Montrose arrived Reindeer, Griffiths from Arbroath

May 27 1847 Montrose sailed Reindeer, Griffiths for Arbroath to load up wheat

May 31 1847 Montrose sailed Reindeer, Griffiths for Gloucester – wheat

June 13 1847 Gloucester arrived Reindeer, Griffiths from Montrose

July 8 1847 Shoreham arrived Reindeer, Griffiths from Gloucester - salt

July 20 1847 Shoreham sailed Reindeer, Griffiths for Runcorn – boulders

July 29 1847 Runcorn arrived Reindeer, Griffiths from Newhaven

August 10 1847 Bangor arrived Reindeer, Griffiths from Liverpool

September 3 1847 Off Liverpool schooner Reindeer

September 19 1847 Port Penrhyn, Bangor cleared out Reindeer, Griffiths – slates

September 23 1847 Bangor windbound off Garth Reindeer, Griffiths for London

September 26 1847 Caernarvon passed through the Straits Reindeer, Griffiths for  
. London

October 5 1847 Falmouth put in Reindeer, Griffiths from Bangor for London

October 7 1847 Falmouth sailed Reindeer, Griffiths for London

October 25 1847 London Customs House entered inwards Reindeer, Griffiths from  
. Penzance

November 11 1847 Pentewan arrived Reindeer, Griffiths from Penrhyn

November 21 1847 Pentewan sailed Reindeer, Griffiths for Liverpool

November 24 1847 Falmouth put in Reindeer, Griffiths from Pentewan for  
. Liverpool

December 6 1847 Runcorn arrived Reindeer, Griffiths from Pentewan

## **1848**

February 24 1848 Caernarvon remain Reindeer, Griffiths for London

February 26 1848 Caernarvon remain Reindeer, Griffiths for London

March 2 1848 Caernarvon sailed Reindeer, Griffiths for London

March 30 1848 London Customs House entered inwards Reindeer, Griffiths from  
. Cork

April 11 1848 Waterford arrived Reindeer, Griffiths from London

April 13 1848 Waterford sailed Reindeer, Griffiths for Cork

April 14 1848 Cork of Cork arrived Reindeer, Griffiths from London

April 14 1848 Cork arrived Reindeer, Griffiths from London

May 15 1848 Glasgow arrived Reindeer, Griffiths from Limerick

June 4 1848 Glasgow sailed Reindeer, Griffiths for Hayle

June 9 1848 Porthdynllaen put in & remain Reindeer, Griffiths from Glasgow for  
. Plymouth

June 14 1848 Porthdynllaen remains Reindeer, Griffiths from Glasgow for  
. Plymouth

June 18 1848 Porthdynllaen sailed Reindeer, Griffiths

June 19 1848 Hayle arrived Reindeer, Griffiths from Glasgow

July 8 1848 Porthdynllaen put in to Bay Reindeer, Griffiths from Plymouth

July 28 1848 Caernarvon sailed Reindeer, Griffiths for London

August 7 1848 Milford put in Reindeer, Griffiths from Caernarvon for London

August 25 1848 London Customs House entered inwards Reindeer, Griffiths from  
Bristol

September 6 1848 Bristol, Pill arrived Reindeer, Griffiths from London

w/e September 16 1848 Bristol came in Reindeer, Griffiths from London

September 15 1848 Newport, Mon cleared Reindeer, Griffiths for Youghal

September 18 1848 Youghal arrived Reindeer, Griffiths from Newport

September 29 1848 Youghal sailed Reindeer, Griffiths for Newport

October 17 1848 Cardiff sailed Reindeer, Griffiths for Limerick

October 23 1848 Limerick arrived Reindeer, Griffiths from Cardiff - iron

November 11 1848 Cove of Cork arrived Reindeer, Griffiths from Limerick for  
Cork – oats

November 12 1848 Cove of Cork put in Reindeer, Griffiths for Liverpool from  
Limerick

November 13 1848 Limerick sailed Reindeer, Griffiths for Liverpool

November 25 1848 Milford put back from Limerick for Liverpool

December 14 1848 Liverpool arrived Reindeer, Griffiths from Limerick

## **1849**

April 20 1849 Caernarvon passed through the Straits Reindeer, Griffiths for  
Eyemouth from Bangor

June 20 1849 Par sailed Reindeer, Griffiths for Liverpool

June 28 1849 Porthdynllaen arrived Reindeer, Griffiths

June 29 1849 Porthdynllaen sailed Reindeer, Griffiths

July 9 1849 Liverpool cleared out Reindeer, Griffiths for Balosadare

July 21 1849 Loughswilly put in Reindeer, Griffiths from Liverpool for Balosadare

August 27 1849 Beaumaris passed by Reindeer, Griffiths for Bangor

September 21 1849 Caernarvon sailed Reindeer, Griffiths for Burntisland



October 30 1849 Sunderland sailed Reindeer, Griffiths for Cowes

November 21 1849 Cowes sailed Reindeer, Griffiths for Poole

December 2 1849 Poole sailed Reindeer, Griffiths for Birkenhead

December 18 1849 Liverpool arrived Reindeer, Griffiths from Poole

## **1850**

April 5 1850 Port Penrhyn, Bangor windbound Reindeer, Griffiths for London

April 5 1850 Caernarvon remains windbound Reindeer, Griffiths for London

April 9 1850 Caernarvon remains windbound Reindeer, Griffiths for London

April 11 1850 Caernarvon sailed Reindeer, Griffiths for London

w/e May 17 1850 Gloucester arrived Reindeer, Griffiths from London

June 30 1850 Porthdynllaen put in Reindeer, Griffiths from Par for Liverpool

July 15 1850 Port Penrhyn, Bangor arrived Reindeer, Griffiths from Liverpool

September 5 1850 Port Penrhyn, Bangor sailed Reindeer, Griffiths - slates

September 5 1850 Caernarvon passed through the Straits Reindeer, Griffiths for  
Eyemouth from Bangor

October 12 1850 Cowes arrived Reindeer, Griffiths from Newcastle – coal

October 18 1850 Cowes sailed Reindeer, Griffiths for Poole

October 21 1850 Poole arrived Reindeer, Griffiths from Cowes

October 25 1850 Poole sailed Reindeer, Griffiths for Liverpool

October 31 1850 St Tudwall's roads windbound Reindeer, Griffiths from Poole for  
Runcorn

November 4 1850 Runcorn arrived Reindeer, Griffiths from Poole

November 15 1850 Port Penrhyn, Bangor arrived Reindeer, Griffiths

December 3 1850 Caernarvon remains Reindeer, Griffiths from this port for  
London

December 13 1850 Caernarvon remains Reindeer, Griffiths from this port for  
London

December 29 1850 Caernarvon remains Reindeer, Griffiths for London

## **1851**

January 10 1851 Caernarvon remains Reindeer, Griffiths for London

February 1 1851 Caernarvon sailed Reindeer, Griffiths for London

February 1 1851 Porthdynllaen put in & sailed Reindeer, Griffiths for London

March 5 1851 London Customs House cleared out Reindeer, Griffiths for Dublin

March 19 1851 Falmouth put in Reindeer, Griffiths for Dublin

March 23 1851 Falmouth sailed Reindeer, Griffiths for Dublin

March 23 1851 Falmouth put back Reindeer, Griffiths for Dublin

April 2 1851 Dublin arrived Reindeer, Griffiths from London

April 23 1851 Caernarvon passed through the Straits Reindeer, Griffiths from  
. Bangor for London

May 1 1851 Porthdynllaen arrived Reindeer, Griffiths

May 1 1851 Porthdynllaen sailed Reindeer, Griffiths

May 15 1851 Poole arrived Reindeer, Griffiths from London

May 24 1851 Poole sailed Reindeer, Griffiths for Liverpool

June 5 1851 Porthdynllaen arrived Reindeer, Griffiths

June 6 1851 Glasgow arrived Reindeer, Griffiths from Poole

June 16 1851 Glasgow sailed Reindeer, Griffiths for Runcorn

July 1 1851 Runcorn sailed Reindeer, Griffiths for Liverpool

July 31 1851 Porthdynllaen sailed Reindeer, Griffiths

August 22 1851 Caernarvon Caernarvon remains Reindeer, Griffiths for Goole

August 24 1851 Caernarvon passed through the Straits Reindeer, Griffiths for  
. Goole

August 28 1851 Caernarvon sailed Reindeer, Griffiths for Goole

September 13 1851 Goole arrived Reindeer, Griffiths from Portmadoc

September 23 1851 Goole sailed Reindeer, Griffiths for Plymouth

October 6 1851 Deal put in & anchored Reindeer, Griffiths from Goole for  
Plymouth

October 17 1851 Plymouth arrived Reindeer, Griffiths from Goole

October 21 1851 Plymouth sailed Reindeer, Griffiths for Chester

November 6 1851 Flint arrived Reindeer, Griffiths from Plymouth

November 17 1851 Port Penrhyn, Bangor arrived Reindeer, Griffiths from Chester

December 3 1851 Liverpool arrived Reindeer

## 1852

January 15 1852 Port Penrhyn, Bangor cleared out Reindeer, Griffiths – slates

February 8 1852 Caernarvon remains Reindeer, Griffiths for London

March 15 1852 London Customs House cleared out Reindeer, Griffiths for  
Newhaven

March 25 1852 Newhaven sailed Reindeer, Griffiths for Liverpool

March 30 1852 Porthdynllaen arrived Reindeer, Griffiths

April 5 1852 Runcorn arrived Reindeer, Griffiths from Newhaven

April 8 1852 Porthdynllaen sailed Reindeer, Griffiths

April 22 1852 Port Penrhyn, Bangor cleared out Reindeer, Griffiths – slates

May 27 1852 Newhaven sailed Reindeer, Griffiths for Runcorn

June 6 1852 Runcorn arrived Reindeer, Griffiths from Newhaven

June 30 1852 Port Penrhyn, Bangor sailed Reindeer, Griffiths for London

August 20 1852 Littlehampton arrived Reindeer, Griffiths from Hartlepool

September 1 1852 Littlehampton sailed Reindeer, Griffiths for Runcorn - flints

September 8 1852 Porthdynllaen put in Reindeer, Griffiths from Littlehampton for  
Runcorn

September 11 1852 Caernarvon passed through the Straits Reindeer, Griffiths for  
Runcorn from Littlehampton

October 14 1852 Port Penrhyn, Bangor sailed Reindeer, Griffiths for Maldon

October 16 1852 Caernarvon passed through the Straits Reindeer, Griffiths for  
Maldon

October 18 1852 Porthdynllaen in port Reindeer, Griffiths for Maldon

October 20 1852 Port Penrhyn, Bangor cleared out Reindeer, Griffiths – slates

October 27 1852 Maldon arrived Reindeer, Griffiths from Bangor

December 1 1852 Hayle arrived Reindeer, Griffiths from Sandwich

December 8 1852 Hayle arrived Reindeer, Griffiths from Maldon

December 24 1852 Caernarvon arrived Reindeer, Griffiths from Hayle

## **1853**

January 19 1853 Caernarvon arrived Reindeer, Griffiths

March 10 1853 Ipswich arrived Reindeer, Griffiths from London

April 23 1853 Milford put in Reindeer, Griffiths from Cardiff for Tralee

May 22 1853 Tralee in the dock Reindeer, Griffiths

May 22 1853 Tralee sailed Reindeer, Griffiths for Liverpool

May 28 1853 Gloucester arrived Reindeer, Griffiths from Tralee

June 16 1853 Gloucester sailed Reindeer, Griffiths for Portsmouth

June 22 1853 Portsmouth arrived Reindeer, Griffiths from Gloucester

July 12 1853 Poole sailed Reindeer, Griffiths for Runcorn

July 20 1853 Porthdynllaen put in Reindeer, Griffiths

July 21 1853 Porthdynllaen sailed Reindeer, Griffiths

July 22 1853 Runcorn arrived Reindeer, Griffiths from Poole

August 3 1853 Port Penrhyn, Bangor arrived Reindeer, Griffiths

August 18 1853 Port Penrhyn, Bangor cleared out Reindeer, Griffiths – slates

August 24 1853 Caledonian Canal passed Reindeer, Griffiths from Bangor for  
Banff

September 7 1853 Banff sailed Reindeer, Griffiths for Wick

September 24 1853 Stockton on Tees arrived Reindeer, Griffiths from  
Middlesbrough

September 28 1853 Stockton on Tees cleared Reindeer, Griffiths for Neath-goods

October 5 1853 Stockton on Tees arrived Reindeer, Griffiths from Bowness

October 6 1853 Stockton on Tees cleared Reindeer, Griffiths for Caernarvon

October 7 1853 Ramsgate put in Reindeer of Nevin, Griffiths from Stockton for  
Neath

October 17 1853 Penarth Roads arrived Reindeer, Griffiths from Stockton to  
Briton ferry – lost masts

October 20 1853 Cardiff arrived Reindeer, Griffiths from Stockton

November 28 1853 In Harrington Dock, Liverpool Reindeer 75 Griffiths

December 7 1853 In Harrington Dock, Liverpool Reindeer 75 Griffiths

December 14 1853 In Harrington Dock, Liverpool Reindeer 75 Griffiths

December 16 1853 Liverpool sailed Reindeer, Griffiths for Bangor

## **1854**

January 31 1854 Caernarvon remains Reindeer, Griffiths for London from Bangor

February 5 1854 Caernarvon remains Reindeer, Griffiths for London from Bangor

February 8 1854 Caernarvon remains Reindeer, Griffiths for London from Bangor

February 16 1854 Porthdynllaen in the bay Reindeer, Griffiths for London from  
Bangor

February 21 1854 Caernarvon remains Reindeer, Griffiths for London from Bangor

March 1 1854 Caernarvon remains Reindeer, Griffiths for London from Bangor

March 4 1854 Caernarvon sailed Reindeer, Griffiths for London

April 13 1854 Runcorn arrived Reindeer, Griffiths from Newhaven

May 24 1854 Caernarvon passed through the Straits Reindeer, Griffiths from  
Bangor for Southampton

May 24 1854 Porthdynllaen put in Reindeer, Griffiths from Bangor to London

May 27 1854 Porthdynllaen sailed Reindeer, Griffiths for Southampton

June 16 1854 Poole arrived Reindeer, Griffiths from Southampton - ballast

July 7 1854 Runcorn sailed Reindeer, Griffiths for Bangor

July 17 1854 Porthdynllaen put in Reindeer, Griffiths from Sandycroft for London

August 19 1854 Ramsgate sailed Reindeer, Griffiths seeking cargo

September 21 1854 Newport, Mon cleared Reindeer, Griffiths for Fowey

October 10 1854 Par arrived Reindeer, Griffiths from Plymouth

## **1855**

March 26 1855 Caernarvon arrived Reindeer, Griffiths

April 26 1855 Porthdynllaen arrived Reindeer, Griffiths

May 17 1855 Port Penrhyn, Bangor cleared out Reindeer, Griffiths – slates

June 15 1855 Glasgow entered outwards Reindeer 75, Griffiths for Bordeaux

June 27 1855 Clyde sailed Reindeer, Griffiths for Bordeaux

July 1 1855 Porthdynllaen put in Reindeer, Griffiths from Clyde to Bordeaux

July 7 1855 Porthdynllaen sailed Reindeer, Griffiths

July 17 1855 Nantes arrived Reindeer, Griffiths from the Clyde

July 17 1855 Bordeaux arrived Reindeer, Griffiths from the Clyde

July 27 1855 Bordeaux sailed Reindeer, Griffiths for Bilbao

August 16 1855 Bilbao sailed Reindeer, Griffiths for London

August 24 1855 Gravesend arrived Reindeer, Griffiths from Bilbao

August 25 1855 London Customs House entered inwards Reindeer 75, Griffiths  
from Bilbao

November 8 1855 Port Penrhyn, Bangor arrived Reindeer, Griffiths

November 22 1855 Port Penrhyn, Bangor cleared out Reindeer, Griffiths – slates

November 22 1855 Caernarvon passed through the Straits Reindeer, Griffiths for  
London

## 1856

February 14 1856 Ardrossan arrived Reindeer, Griffiths from London

February 21 1856 Holyhead arrived Reindeer, Griffiths from Ardrossan for Havre

March 22 1856 St Valery arrived Reindeer, Griffiths from Ardrossan

April 1 1856 St Valery sur Somme sailed Reindeer, Griffiths for Ardrossan

April 2 1856 Newhaven arrived Reindeer, Griffiths from St Valery sur Somme

April 15 1856 Newhaven sailed Reindeer, Griffiths for Runcorn

June 1 1856 Caernarvon passed through the Straits Reindeer, Griffiths from  
Bangor for Barmouth

June 4 1856 Porthdynllaen arrived Reindeer, Griffiths

June 5 1856 Porthdynllaen sailed Reindeer, Griffiths

June 26 1856 Warkworth arrived Reindeer, Griffiths from Alnmouth - ballast

July 2 1856 Warkworth Cleared Reindeer, Griffiths for Dartmouth

July 23 1856 Par arrived Reindeer, Griffiths from Dartmouth

July 25 1856 Par sailed Reindeer, Griffiths for Runcorn

August 14 1856 Port Penrhyn, Bangor arrived Reindeer, Griffiths

August 28 1856 Port Penrhyn, Bangor cleared out Reindeer, Griffiths – slates

August 28 1856 Caernarvon remains windbound Reindeer, Griffiths for London

September 2 1856 Caernarvon passed through the Straits Reindeer, Griffiths  
from Bangor for London

October 6 1856 Ramsgate sailed Reindeer, Griffiths for Plymouth

w/e October 9 1856 Plymouth arrived Reindeer, Griffiths from London

October 29 1856 Charlestown sailed Reindeer, Griffiths for Runcorn

December 12 1856 Port Penrhyn, Bangor arrived Reindeer, Griffiths

**1857**

February 14 1857 Caernarvon windbound in the Straits Reindeer, Griffiths from  
Bangor for London

February 19 1857 Caernarvon passed through the Straits Reindeer, Griffiths from  
Bangor for London

June 17 1857 Queenstown arrived Reindeer, Griffiths from Kirkaldy for Cork -oats

July 1 1857 Caernarvon arrived Reindeer, Griffiths

July 2 1857 Port Penrhyn, Bangor arrived Reindeer, Griffiths

July 30 1857 Porthdynllaen sailed Reindeer, Griffiths

September 27 1857 Cork arrived Reindeer, Griffiths from London- hemp & goods

October 8 1857 Port Penrhyn, Bangor arrived Reindeer, Griffiths

October 22 1857 Port Penrhyn, Bangor cleared out Reindeer, Griffiths – slates

November 5 1857 Deal arrived Reindeer from westward

**1858**

May 20 1858 Port Penrhyn, Bangor arrived Reindeer, Griffiths

June 17 1858 Port Penrhyn, Bangor cleared out Reindeer, Griffiths – slates

June 19 1858 Porthdynllaen put in & sailed Reindeer, Griffiths for London

July 10 1858 Newhaven arrived Reindeer, Griffiths from London

July 17 1858 Newhaven sailed Reindeer, Griffiths for Runcorn

August 5 1858 Porthdynllaen still in the Bay Reindeer, Griffiths

August 26 1858 Port Penrhyn, Bangor arrived Reindeer, Griffiths

September 28 1858 Caernarvon passed through the Straits Reindeer, Griffiths  
from Bangor for London

**1859**

January 20 1859 Port Penrhyn, Bangor arrived Reindeer, Griffiths



July 13 1859 Newcastle cleared Reindeer, Griffiths for Brest – 43 chs coals

July 25 1859 Brest arrived Reindeer, Griffiths from Newcastle

August 6 1859 Par arrived Reindeer, Griffiths from Brest

September 5 1859 Newhaven sailed Reindeer, Griffiths for Runcorn

November 10 1859 Port Penrhyn, Bangor cleared out Reindeer, Griffiths – slates

## **1860**

January 26 1860 Ramsgate put in Reindeer, Griffiths from Ipswich for Penzance

September 20 1860 Port Penrhyn, Bangor cleared out Reindeer, Griffiths – slates

November 8 1860 Poole sailed Reindeer, Griffiths for Runcorn

## **1861**

March 22 1861 London Customs House entered inwards Reindeer, Griffiths from  
 . Londonderry

July 12 1861 Runcorn arrived Reindeer, Griffiths from Poole

August 15 1861 Porthdynllaen arrived Reindeer, Griffiths from Chester

October 1 1861 Poole arrived Reindeer, Griffiths from Rochester

November 7 1861 Port Penrhyn, Bangor arrived Reindeer, Griffiths

## **1862**

January 2 1862 Pwllheli arrived Reindeer, Griffiths from Bangor

April 15 1862 Porthdynllaen put in Reindeer, Griffiths seeking cargo

May 22 1862 Port Penrhyn, Bangor sailed Reindeer, Griffiths – slates

June 19 1862 Shoreham arrived Reindeer, Griffiths from London

June 27 1862 Shoreham sailed Reindeer, Griffiths for Runcorn - Boulders

July 22 1862 Beaumaris passed Reindeer, Griffiths Bangor

August 14 1862 Port Penrhyn, Bangor cleared out Reindeer, Griffiths – slates

**1863**

June 4 1863 Ipswich sailed Reindeer, Griffiths for Gloucester

December 23 1863 Newhaven put in windbound Reindeer, Griffiths from London  
for Plymouth

**1864**

January 3 1864 Newhaven sailed Reindeer, Griffiths for Plymouth

February 27 1864 Caernarvon arrived Reindeer, Griffiths from Liverpool

March 3 1864 Caernarvon arrived Reindeer, Griffiths from Liverpool

May 5 1864 Ipswich sailed Reindeer, Griffiths for Poole

May 10 1864 Poole arrived Reindeer, Griffiths from Ipswich

May 12 1864 Poole sailed Reindeer, Griffiths for Truro

June 9 1864 Ipswich arrived Reindeer, Griffiths from Caernarvon – slates

September 1 1864 Port Penrhyn, Bangor arrived Reindeer, Griffiths

December 26 1864 Poole arrived Reindeer, Griffiths from Chichester - ballast

**1865**

January 3 1865 Poole sailed Reindeer, Griffiths for Runcorn - clay

January 11 1865 Portland remain in roads Reindeer, Griffiths for Runcorn – calm

January 28 1865 Holyhead sailed Reindeer, Griffiths for Liverpool

April 13 1865 Port Penrhyn, Bangor cleared out Reindeer, Griffiths – slates

May 5 1865 London Customs House cleared out Reindeer, Griffiths for Newport

May 22 1865 Newport arrived Reindeer, Griffiths from London

May 27 1865 Newport sailed Reindeer, Griffiths for Plymouth

June 19 1865 Par sailed Reindeer, Griffiths for Runcorn

July 27 1865 Porthdynllaen arrived Reindeer, Griffiths from Dublin

August 23 1865 Porthdynllaen sailed Reindeer, Griffiths for London

August 25 1865 Milford sailed Reindeer, Griffiths for Newcastle from Caernarvon

October 17 1865 Padstow sailed Reindeer, Griffiths for Caernarvon

October 19 1865 Cardiff arrived Reindeer, Griffiths from Padstow

November 28 1865 Liverpool sailed Reindeer, Griffiths for Caernarvon

November 30 1865 Caernarvon arrived Reindeer, Griffiths from Liverpool

## **1866**

April 19 1866 Shoreham arrived Reindeer, Griffiths from London

April 22 1866 Shoreham sailed Reindeer, Griffiths for Liverpool

May 5 1866 Liverpool arrived Reindeer, Griffiths from London

May 17 1866 Liverpool sailed Reindeer, Griffiths for Caernarvon

August 23 1866 Milford put in Reindeer, Griffiths from Port Dinorwic for London

October 10 1866 Milford put in windbound Reindeer, Griffiths from London for  
Cardiff

October 18 1866 Cardiff arrived Reindeer, Griffiths from London

October 26 1866 Cardiff sailed Reindeer, Griffiths for Waterford

December 16 1866 Waterford sailed Reindeer, Griffiths for Caernarvon

December 16 1866 Porthdynllaen arrived Reindeer, Griffiths from Waterford

December 16 1866 Porthdynllaen sailed Reindeer, Griffiths for Caernarvon

December 20 1866 Porthdynllaen arrived Reindeer, Griffiths

## **1867**

April 3 1867 Portland sailed Reindeer for London

June 19 1867 Runcorn arrived Reindeer, Griffiths from London

July 2 1867 Dublin sailed Reindeer for Liverpool

August 12 1867 Bowness sailed Reindeer, Griffiths for Boulogne

August 27 1867 Portland sailed Reindeer for London

September 27 1867 Runcorn arrived Reindeer, Griffiths from Pentewan

October 17 1867 Caernarvon arrived Reindeer, Griffiths from Liverpool

## **1868**

January 15 1868 Torquay arrived Reindeer, Griffiths from Caernarvon

January 20 1868 Torquay sailed Reindeer, Griffiths for Par

March 7 1868 Runcorn sailed Reindeer, Griffiths for Bangor

July 16 1868 Waterford arrived Reindeer from Cardiff

October 28 1868 Leith sailed Reindeer, Griffiths for Boulogne

November 8 1868 Boulogne arrived Reindeer, Griffiths from Leith

December 15 1868 Yarmouth IOW off at anchor Reindeer of Nevin, Griffiths  
· seeking cargo

December 20 1868 Yarmouth IOW sailed Reindeer of Nevin, Griffiths for west

December 24 1868 Fowey arrived Reindeer, Griffiths from Torquay

## **1869**

January 1 1869 Poole sailed Reindeer, Griffiths for Runcorn

February 22 1869 Liverpool sailed Reindeer, Griffiths for Yarmouth

April 26 May 6 1869 Penryn arrived Reindeer, Griffiths from Yarmouth

May 6 1869 Penryn sailed Reindeer, Griffiths for Falmouth

June 24 1869 Porthdynllaen arrived Reindeer, Griffiths from Runcorn

June 25 1869 Porthdynllaen sailed Reindeer, Griffiths for London

July 6 1869 London Customs House entered inwards Reindeer, Griffiths from  
· Runcorn

July 14 1869 London Customs House cleared out Reindeer, Griffiths for Swansea

July 22 1869 Swansea arrived Reindeer, Griffiths from London

July 28 1869 Swansea sailed Reindeer for Newquay

September 4 1869 Runcorn arrived Reindeer, Griffiths from Par

## **1870**

March 16 1870 Plymouth put in Reindeer, Griffiths from Port Dinorwic for London

April 9 1870 In Victoria dock, London Reindeer 75, Griffiths from Caernarvon

April 13 1870 Ipswich arrived Reindeer, Griffiths from London

June 18 1870 Cork sailed Reindeer, Griffiths for Portmadoc

June 20 1870 Porthdynllaen arrived Reindeer, Griffiths from Cork

June 21 1870 Port Dinorwic arrived Reindeer, Griffiths from Cork

June 22 1870 Caernarvon arrived Reindeer, Griffiths from Porthdynllaen

June 22 1870 Caernarvon sailed Reindeer, Griffiths for Bangor

August 3 1870 Dartmouth sailed Reindeer for London - slates

August 15 1870 London Customs House cleared out Reindeer, Griffiths for Siloth

August 28 1870 Milford put in Reindeer, Griffiths from London for Siloth

August 29 1870 Milford remaining Reindeer, Griffiths from London for Siloth

September 2 1870 Porthdynllaen arrived Reindeer, Griffiths from London

September 4 1870 Porthdynllaen sailed Reindeer, Griffiths for Siloth

September 8 1870 Porthdynllaen arrived Reindeer, Griffiths

September 9 1870 Porthdynllaen sailed Reindeer, Griffiths

September 20 1870 Siloth arrived Reindeer, Griffiths from London

September 27 1870 Siloth sailed Reindeer, Griffiths for Belfast

October 7 1870 Ayr arrived Reindeer, Griffiths from Belfast

November 1 1870 Cairnryan windbound Reindeer, Griffiths from Ayr for Cardiff

November 8 1870 Cardiff arrived Reindeer, Griffiths from Ayr

November 17 1870 Cardiff sailed Reindeer, Griffiths for Milford

## **1871**

January 3 1871 Milford put in Reindeer, Griffiths from Llanelly for Drogheda

January 28 1871 Drogheda arrived Reindeer, Griffiths from Llanelly – coal

May 7 1871 Deal passed Reindeer of Caernarvon from west to north

May 8 1871 Gravesend arrived Reindeer, Griffiths from Caernarvon

May 23 1871 London Customs House entered inwards Reindeer, Griffiths from  
Dundalk

June 8 1871 Aberdaron put into the bay windbound Reindeer, Griffiths from  
London for Dundalk

June 13 1871 Porthdynllaen arrived Reindeer, Griffiths from London

June 13 1871 Porthdynllaen sailed Reindeer, Griffiths for Dundalk

June 14 1871 Dundalk arrived Reindeer, Griffiths from London

June 17 1871 Dundalk sailed Reindeer, Griffiths for Ardrossan

June 19 1871 Porthdynllaen arrived Reindeer, Griffiths from Dundalk

July 19 1871 Porthdynllaen arrived Reindeer, Griffiths from London

July 20 1871 Porthdynllaen sailed Reindeer, Griffiths for Port Nant

September 4 1871 London Customs House cleared out Reindeer, Griffiths for  
Liverpool

September 20 1871 Liverpool arrived Reindeer, Griffiths from London

September 27 1871 Liverpool sailed Reindeer for Caernarvon

September 30 1871 Beaumaris arrived Reindeer, Griffiths from Liverpool

## **1872**

April 19 1872 Swansea arrived Reindeer, Griffiths from Bristol

April 27 1872 Swansea sailed Reindeer, Griffiths for Pwllheli

May 6 1872 Pwllheli arrived Reindeer, Griffiths from Swansea

May 16 1872 Pwllheli sailed Reindeer, Griffiths  
May 21 1872 Portmadoc sailed Reindeer, Griffiths for London  
May 22 1872 St Tudwell's Roads put in Reindeer, Griffiths for London  
May 24 1872 St Tudwell's Roads sailed Reindeer, Griffiths for London  
June 27 1872 Ipswich sailed Reindeer, Griffiths – potash  
July 8 1872 Swanage put in Reindeer, Griffiths from Ipswich for Runcorn  
July 18 1872 Swanage off St Albans Head the Schooner Reindeer from east to  
. west  
July 18 1872 Porthdynllaen arrived Reindeer, Griffiths from Ipswich  
August 7 1872 Runcorn sailed Reindeer, Griffiths for Dublin  
August 15 1872 Holyhead arrived Reindeer, Griffiths from Runcorn  
August 25 1872 Porthdynllaen arrived Reindeer, Griffiths from Dublin  
October 1 1872 Porthdynllaen arrived Reindeer, Griffiths from Dublin  
October 1 1872 Porthdynllaen sailed Reindeer, Griffiths for Llanaelhairn  
October 6 1872 Llanaelhairn ready for sea Reindeer, Griffiths for Bristol  
October 8 1872 Llanaelhairn sailed Reindeer, Griffiths for Runcorn  
October 10 1872 Porthdynllaen arrived Reindeer, Griffiths from Llanaelhairn  
October 11 1872 Porthdynllaen sailed Reindeer, Griffiths for Liverpool  
November 23 1872 Beaumaris sailed Reindeer, Griffiths for Douglas  
December 12 1872 Caernarvon arrived Reindeer, Griffiths from Douglas

### **1873**

April 17 1873 Penarth Roads arrived Reindeer, Griffiths from Bristol -light  
May 12 1873 Llanaelhairn arrived Reindeer, Griffiths  
May 15 1873 Pwllheli arrived Reindeer, Griffiths from Cardiff  
May 16 1873 Pwllheli sailed Reindeer, Griffiths for Llanaelhairn  
May 17 1873 Porthdynllaen sailed Reindeer, Griffiths for Llanaelhairn

May 19 1873 Llanaelhairn sailed Reindeer, Griffiths for Liverpool

May 31 1873 Liverpool sailed Reindeer, Griffiths for Dublin

June 12 1873 Porthdynllaen arrived Reindeer, Griffiths from Dublin

June 29 1873 Porthdynllaen arrived Reindeer, Griffiths from Llanaelhairn

June 30 1873 Porthdynllaen sailed Reindeer, Griffiths for Runcorn

July 22 1873 Runcorn sailed Reindeer, Griffiths for Dublin

September 1 1873 Caernarvon arrived Reindeer, Griffiths from Dublin

September 21 1873 Caernarvon sailed Reindeer, Griffiths for Belfast

September 26 1873 Belfast arrived Reindeer, Griffiths from Caernarvon - slates

October 9 1873 Belfast arrived Reindeer, Griffiths from Newry

November 17 1873 Newry arrived Reindeer, Griffiths from Belfast

## **1874**

April 17 1874 Port Dinorwic arrived Reindeer, Griffiths from Caernarvon

May 7 1874 Poole arrived Reindeer, Griffiths from Caernarvon

May 22 1874 Poole sailed Reindeer, Griffiths for Runcorn

June 22 1874 Yarmouth IOW put in schooner Reindeer

June 23 1874 Yarmouth IOW schooner Reindeer sailed for westward

July 5 1874 Poole arrived Reindeer, Griffiths from Portsmouth

August 28 1874 Port Dinorwic sailed Reindeer, Griffiths for London

October 2 1874 Porthdynllaen arrived Reindeer, Griffiths from Port Dinorwic

October 5 1874 Porthdynllaen sailed Reindeer, Griffiths for London

October 20 1874 Off Bardsey Island Reindeer, Griffiths sank from Port Dinorwic  
to London



## Appendix C      Mercantile Navy List for Reindeer 10635

1857 Registered at Pwllheli

No change until 1865 when more details included



Mercantile Navy List, 1865, page 305

Ship: REINDEER

Image source: [clip](#) [Crew List Index](#)

| Year 1865 GO |                                    | Page 305 GO |      | Notes |                                       |
|--------------|------------------------------------|-------------|------|-------|---------------------------------------|
| 45063        | Reigate, London                    | V.B.R.F     | 1032 | ..    | Mrs. Jean Crawford, Greenock.         |
| 32217        | Reinauw Engelkens, Dunedin, N.Z.   | Q.V.F.R     | 92   | ..    | Charles E. Dean, Melbourne.           |
| 3375         | Rein Deer, Glasgow                 | H.T.B.W     | 84   | 70    | (b) James Duncan Mullens, London.     |
| 46247        | Rein Deer, Montreal                | V.H.Q.C     | 125  | 65    | John Cameron, Toronto, Canada.        |
| 37216        | Reindeer, Digby, N. S.             | S.D.C.B     | 33   | ..    | John Rice, Hillsburg, N.S.            |
| 7565         | Reindeer, Grimsby                  | J.T.M.G     | 41   | ..    | James Noland, Great Grimsby, Linc     |
| 34854        | Reindeer, Halifax, N. S.           | R.M.F.N     | 37   | ..    | James S. Cunningham, Barrington,      |
| 35777        | Reindeer, Halifax, N. S.           | R.S.C.D     | 134  | ..    | Wm. B. Hamilton, Halifax, N.S.        |
| 36348        | Reindeer, Halifax, N. S.           | R.V.K.D     | 60   | ..    | James Rood, St. Mary's, Guysborou     |
| 21362        | Reindeer, Harwich                  | N.G.B.D     | 63   | ..    | Luke Richmond, jun., Harwich.         |
| 31979        | Reindeer, Hobart Town              | Q.T.F.V     | 103  | ..    | William Belbin, Hobart Town, Tas      |
| 9574         | Reindeer, Jersey                   | K.H.V.F     | 24   | ..    | P. E. Mollet, Jersey.                 |
| 45454        | Reindeer, Liverpool                | V.D.K.G     | 965  | ..    | Lewis Roberts Warley, Liverpool.      |
| 4378         | Reindeer, London                   |             | 54   | ..    | J. T. Morgan, Barking.                |
| 35063        | Reindeer, London                   | R.C.S.F     | 349  | ..    | Mariam de Murrieta, Adams Court,      |
| 42349        | Reindeer, Parrsboro', N.S.         | T.J.L.F     | 73   | ..    | (b) William Canning, Parrsboro', N.S. |
| 8524         | Reindeer, Plymouth                 |             | 35   | ..    | Richd. Stubbs, 38, New Street, Plym   |
| 39173        | Reindeer, Prince Edward Island     | S.N.F.L     | 49   | ..    | Thomas Foley, Charlotte Town, Pri     |
| 10635        | Reindeer, Pwllheli                 | K.P.G.W     | 75   | ..    | Hugh Griffith, Nevin, Caernarvon.     |
| 41844        | Reindeer, St. John, N.B.           | T.G.J.N     | 54   | ..    | Wm. Henry Buck, St. John, N.B.        |
| 41880        | Reindeer, St. John, N.B.           | T.G.L.W     | 108  | —     | (a)                                   |
| 34431        | Reindeer, St. John's, Newfoundland | R.K.L.H     | 28   | ..    | Thomas H. Crooking, London.           |
| 41414        | Reindeer, St. John's, Newfoundland | T.D.M.V     | 148  | ..    | John Goodridge, St. John's, Newfou    |
| 5923         | Reindeer, Scarborough              | J.L.Q.T     | 42   | ..    | James Sella, Scarborough.             |
| 22650        | Reindeer, Scarborough              | N.M.H.W     | 200  | ..    | George Rynne, East Ayton, near Sc     |
| 44909        | Reindeer, Southampton              | V.B.D.T     | 40   | ..    | George Hunt, Rockville, Dartmouth     |
| 6927         | Reindeer, Yarmouth                 | J.Q.T.R     | 21   | ..    | William Beales, Yarmouth, Norfolk     |
| 15752        | Reindeer, Yarmouth                 | L.T.P.O     | 18   | ..    | Abel King, Yarmouth, Norfolk.         |
| 33152        | Reindeer, Yarmouth, N.S.           | S.H.W.K     | 16   | ..    | Joseph Kenney, Darrington, N.S.       |
| 33168        | Reino des Anges, Quebec            | R.D.G.F     | 62   | ..    | Clovis Lemay, St. Jean, Des-chailon   |

No changes until 1871 when there is no entry

## Appendix D Appropriation Book Entry & Crew Lists

### Appropriation Books, Official Numbers 10601 - 10650 (10635)

Image source [CL](#)

|   |       |             |    |   |           |              |               |
|---|-------|-------------|----|---|-----------|--------------|---------------|
| adr. 10/11/77   | 10629 | Water Lily  | 77 | - | -         | 8 Feb 1865   | -             |
| Foundered at sea. as per Cert. 10/12/84                     | 10630 | Scamander   | 82 | - | Beaumaris | 10 -- 1854   | -             |
|   | 10631 | Clarence    | 61 | - | -         | 10 Dec 1850  | -             |
|   | 10632 | Experiments | 51 | - | Chester   | 22 Feb 1863  | -             |
| Lost 11 Aug 1861 per Capt. doct.                            | 10633 | Frederick   | 54 | - | -         | 18 Oct 1864  | -             |
|   | 10634 | Raindeer    | 75 | - | Carmarvon | 24 Jan 1869  | -             |
| Lost as per ant. doct. Jan 1860                             | 10635 | Clarence    | 54 | - | Beaumaris | 4 May 1866   | -             |
|   | 10636 | Clarence    | 55 | - | Beaumaris | 20 June 1869 | -             |
| Lost 10/11/68   | 10637 | John & Anne | 56 | - | -         | 19 Nov 1861  | -             |
| Foundered 10/11/68  | 10638 | Samuel      | 98 | - | Beaumaris | 19 June 1855 | New Pesse     |
| Lost 22 Jan 1864  | 10639 | Mary Ann    | 51 | - | Beaumaris | 19 Mar 1844  | Col & present |
| Lost 22 Jan 1856 - as per Cert. of Wreck dated 27 Feb 1856. | 10640 | Marianne    | 53 | - | -         | 17 Aug 1862  | -             |
|   | 10641 | Ann & Sarah | 54 | - | -         | 5 Jan 1868   | -             |
|   | 10642 | Ann         | 20 | - | -         | 4 July 1850  | -             |
|   | 10643 | Ann         | 20 | - | -         | -            | -             |
|   | 10644 | Ann         | 20 | - | -         | -            | -             |

### Crew Lists

1870 may be held by National Archives ref BT99/630

1863 – 1879 except above and below held by Gwynedd Archives

1861, 2 1865 and 1875 may be held by the National Maritime Museum

## Appendix E    Locations of Ports

**Aberdaron** is a former fishing village at the western tip of the Llŷn Peninsula in the Welsh county of Gwynedd. It lies 14.8 miles west of Pwllheli.

**Alnmouth** is a coastal village in Northumberland, England, situated 4 miles east-south-east of Alnwick

**Ardrossan** is a town on the North Ayrshire coast in southwestern Scotland and is located on the east shore of the Firth of Clyde

Ballysadare, locally also **Ballisodare**, is a town in County Sligo, Ireland. It is about 7 kilometres south of Sligo town.

**Banff** is a town in the Banff and Buchan area of Aberdeenshire, Scotland. It is situated on Banff Bay on the estuary of the River Deveron.

**Bordeaux**, is a port city on the Garonne River in southwestern France.

**Bowness-on-Solway** is a village of fewer than 100 houses in northwest Cumbria, situated to the west of Carlisle on the southern side of the Solway Firth estuary separating England and Scotland.

**Burntisland** is in Fife, Scotland, on the northern shore of the Firth of Forth.

**Cairnryan** is a village in the county of Wigtownshire, Dumfries and Galloway, Scotland. It lies on the eastern shore of Loch Ryan, 6 miles north of Stranraer

**Charlestown** is a village and port on the south coast of Cornwall, United Kingdom, and in St Austell Bay. It is situated approximately 2 miles south east of St Austell.

**Caledonian Canal** connects the Scottish east coast at Inverness with the west coast at Corpach near Fort William in Scotland.

**Cove of Cork** from 1850 Queenstown, now Port of Cobh is situated on Great Island in Cork Harbour.

**Cowes** is an English seaport town on the Isle of Wight. Cowes is located on the west bank of the estuary of the River Medina.

Deeside is the name given to a conurbation of towns and villages in Flintshire and Cheshire on the Wales–England border lying near the canalised stretch of the River Dee that flows from neighbouring Chester into the Dee Estuary. These include Connah's Quay, Shotton, Queensferry, Aston, Garden City, Sealand, Broughton, Bretton, Hawarden, Ewloe, Mancot, Pentre, Saltney and **Sandycroft**.

**Eyemouth** is a small town in Berwickshire, in the Scottish Borders area of Scotland. It is 8 miles north of Berwick-upon-Tweed.

**Flint** is a town in Flintshire, Wales, lying on the estuary of the River Dee.

**Fowey** is a small town, and cargo port at the mouth of the River Fowey in south Cornwall, England,

**Goole** is a port in the East Riding of Yorkshire, England.

**Harrington Dock** was a dock on the River Mersey and part of the Port of Liverpool. Situated in the southern dock system, it was connected to Toxteth Dock to the north and Herculaneum Dock to the south.

Le **Havre** is a major port in northern France's Normandy region, where the Seine River meets the English Channel.

**Hayle** is a small town, and cargo port in west Cornwall, United Kingdom. It is situated at the mouth of the Hayle River and is approximately seven miles northeast of Penzance.

**Kirkcaldy** is a town in Fife, on the east coast of Scotland. It is about 11.6 miles north of Edinburgh and 27.6 miles south-southwest of Dundee.

**Leith** in Edinburgh

**Llanaelhaearn** is a village on the Llŷn Peninsula in the county of Gwynedd, Wales.

**Lough Swilly** in Ireland is a glacial fjord or sea inlet lying between the western side of the Inishowen Peninsula and the Fanad Peninsula, in County Donegal.

**Maldon** is a town on the Blackwater estuary in Essex, England.

**Port Nant** was Nant Gwrtheyrn where vast quarrying in granite quarries took place along a five mile stretch of coastline on the north Llyn peninsula.

**Nantes**, a city on the Loire River in the Upper Brittany region of western France,

**Newhaven** in East Sussex in England, lies at the mouth of the River Ouse, which has historically migrated westward from Seaford, one of the Cinque Ports.

**Par** is a village with a harbour on the south coast of Cornwall, England, United Kingdom, it is approximately 3.5 miles east of St Austell

**Penryn** a town in west Cornwall, England, United Kingdom. It is on the Penryn River about 1 mile northwest of Falmouth.

**Pentewan** is a coastal village and former port in south Cornwall, near St Austell and china clay mining.

**Porthdinllaen** was originally a fishing port, based around a natural harbour at the west end of a bay over a mile and a quarter across, and with over one hundred acres of safe anchorage. The harbour is sheltered by a headland jutting out to the north from all but a north-easterly wind, and as the only such haven on the Llŷn Peninsula, it has been used for many centuries of trading, and as a place to run to for shelter in a storm.

**Port Penrhyn** lies at the east end of the Menai Strait that separates Anglesey from mainland Wales, adjacent to the town of Bangor and was the main shipping point for Penrhyn slate from the late eighteenth century to the twentieth. The river Cegin enters from the south.

**Puffin Island** is an uninhabited island off the eastern tip of Anglesey, Wales. It was formerly known as Priestholm in English and Ynys Lannog in Welsh.

**Queenstown**, from 1850 until 1920 now Port of Cobh, previously Cove of Cork, is situated on Great Island in Cork Harbour.

**Runcorn** – on Mersey River near Liverpool and the Manchester ship canal, exports salt

**Sandwich** is a historic town in the Dover District of Kent, south-east England. It lies on the River Stour

**Saint-Valery-sur-Somme**, commune in the Somme department, is a seaport and resort on the south bank of the River Somme estuary.

**Silloth** is a port town in Cumbria, historically in the county of Cumberland, England.

**Stockton-on-Tees**, also simply referred to as Stockton, is a large market town in County Durham, England.

**Truro** is a cathedral city in Cornwall, England, limit of navigable water from Falmouth on the river Fal.

**Warkworth** is a village in Northumberland, England. The village is situated in a loop of the River Coquet, about 1 mile from the Northumberland coast

**Wepra** on the River Dee is near Connah's Quay in Flintshire, Wales and Chester.

**Wick** is a town in Caithness, in the far north of Scotland. The town straddles the River Wick.

## Appendix F Measures used and cargo explanation

The "quarter of London" mentioned by Magna Carta as the national standard measure for wine, ale, and grain was  $\frac{1}{4}$  ton or tun. It continued to be used, e.g. to regulate the prices of bread. This quarter was a unit of 8 bushels of 8 gallons each, understood at the time as a measure of both weight and volume: the grain gallon or half-peck was composed of 76,800 (Tower) grains weight; the ale gallon was composed of the ale filling an equivalent container; and the wine gallon was composed of the wine weighing an equivalent amount to a full gallon of grain.

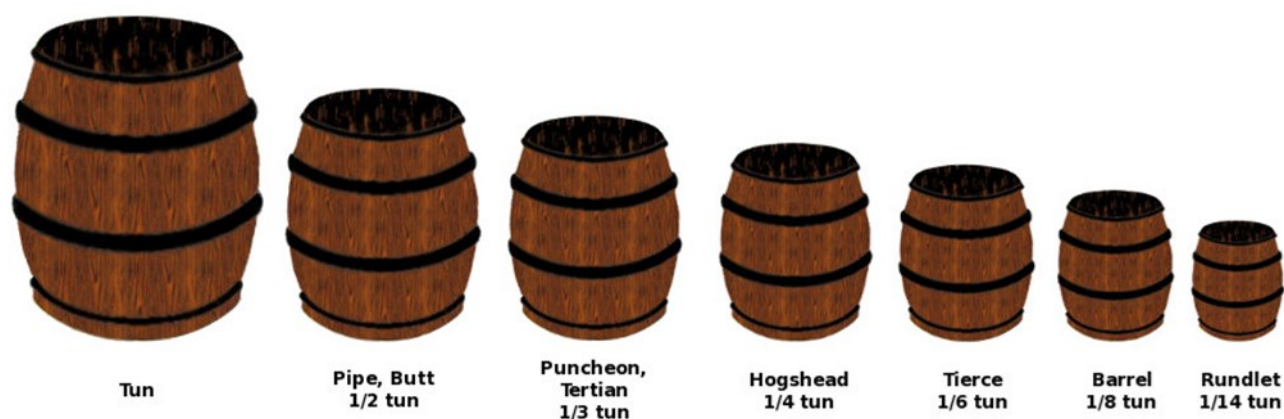


Fig. 1 Measures used for dry and wet goods

**A sett** is a slab of granite, shaped into square or rectangular blocks. These setts were used as cobblestones on streets throughout Britain.

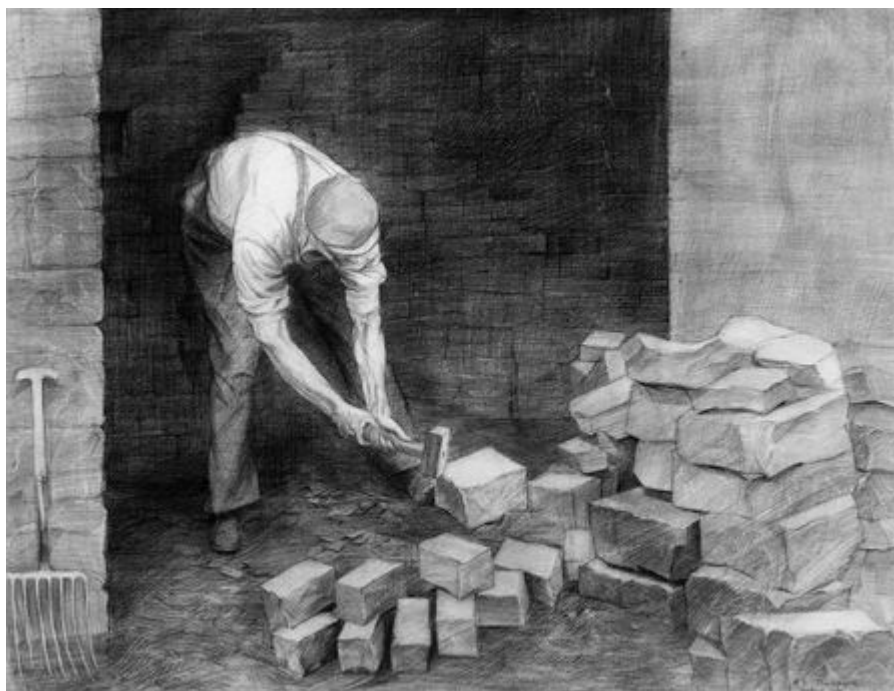
**Clay** usually china clay used for fine ceramics, clay pipes and later as a paper filler.

**Poole clay** the west of Poole, in the Wareham basin, lies one of the few substantial deposits of "ball clay" in the world. Ball clay has qualities which make it important in the production of white ceramics.





**Fig. 2** **Granite setts**



**Fig. 3** **A Sett maker**



Fig. 4

Map of Ireland

Newry 
 Queenstown/Cove of Cork 
 Ballisodare 
 Lough Swilly



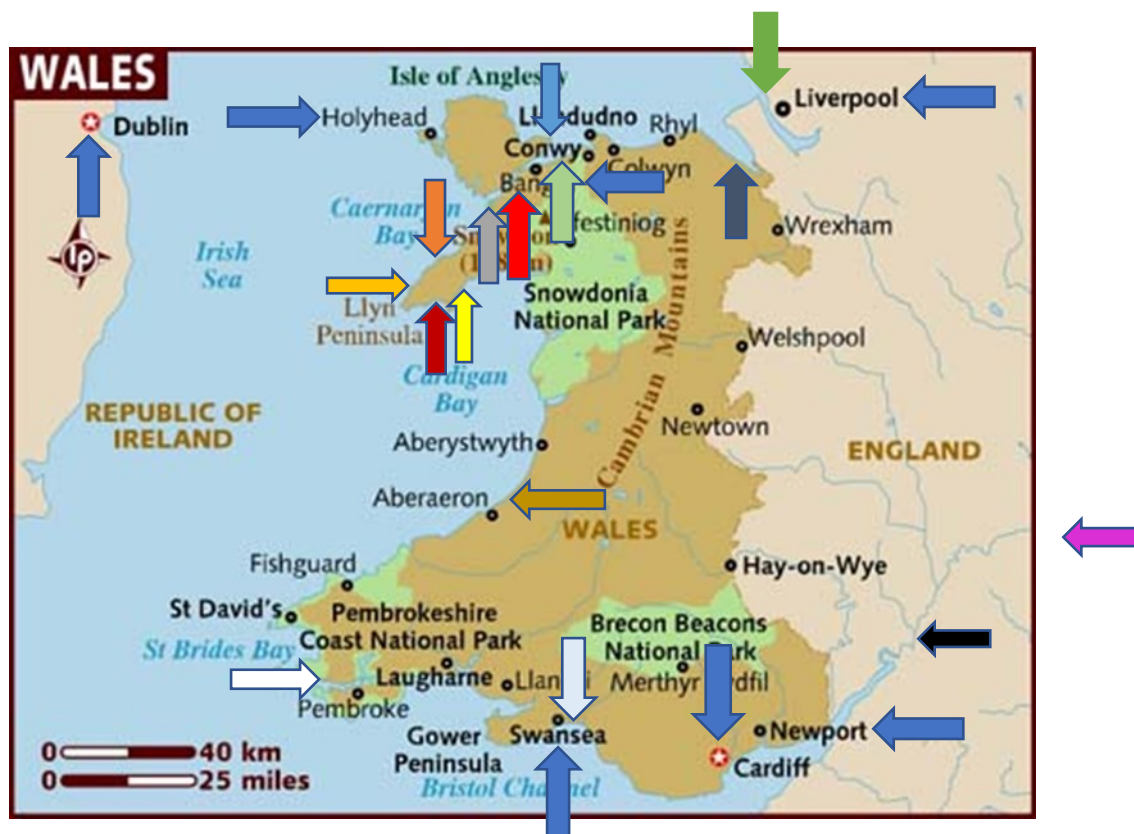
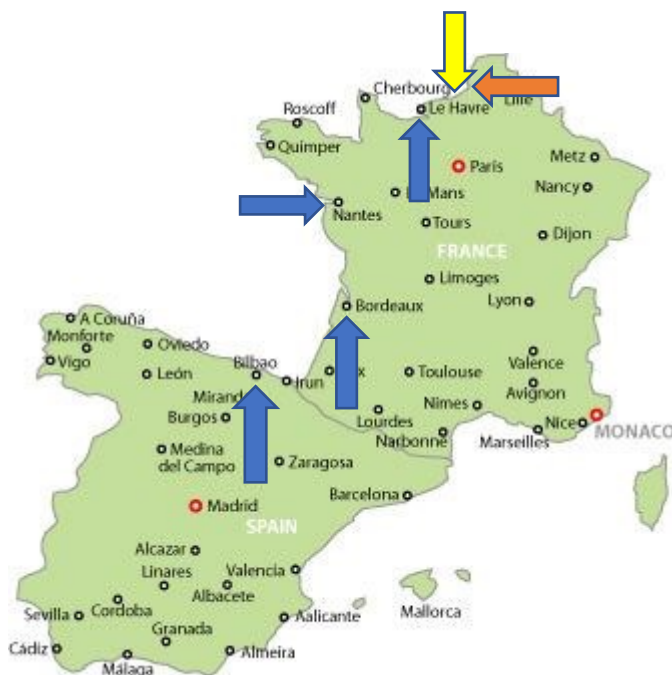


Fig. 5

Map of Wales

→ Milford → Gloucester → Flint → Llanaelhaearn → Caernarvon  
 → Port Nant → Puffin Island → Runcorn → Aberdaron → Port Dinorwic  
 → Pwllheli → Beaumaris → Newquay → Neath



.Fig. 6

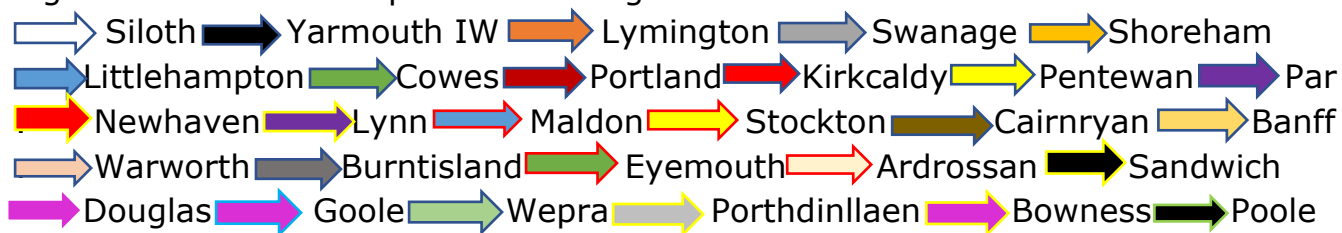
Map of France





→ Boulogne → St Vallery sur somme



Fig. 7

Map of United kingdom



 Dartmouth  Yarmouth  Clyde  Hayle